

What's New in Alfabet 11.9

GA: July 2025

Strategic initiatives for Alfabet

Flexible and
consistent
dashboarding/
reporting

Data filtering and
scope sharing

Easy and guided
data entry

State of the art
modelling
capabilities

Functional
richness of Alfabet
10 and beyond

Migration of
existing customers

Intelligent &
contextualized
Help

Intuitive and web-
based **solution**
configuration

Plug and play
integrations

Performant and
modern system

Alfabet 11.9 Release Highlights



Release Highlights:

- Guided Data Entry in Workflow
- Multi-language Support
- Dark Theme
- Categorized Content Item
- Content Area Designer
- Class-level Operations
- Calculated Properties
- Advanced Range Definition

Guided Data Entry Workflow

Provide users direction for better affinity, adoption and data quality

Toggle button to switch between Analysis View and Data Entry View

Data quality panel

Data entry

User assistance when performing workflow steps

Comfortable inline editing

Instant data quality feedback

Multi-Language Support

Support for a global and geographically diverse workforce

UI non-primary language (German)

Applikationen

Gefunden: 436

	#	Applikation	Name	Kurzbezeichnung	Objekt	Startdatum
		<input type="checkbox"/>	<input type="text"/>	<input type="text"/>	All	<input type="text"/>
↗	1	<input type="checkbox"/> 1C Payroll RU 3.2	1C Payroll RU		Aktiv	15.01.2019
↗	2	<input type="checkbox"/> ACC-Konto 1.2	ACC-Konto		Aktiv	10.01.2024
↗	3	<input type="checkbox"/> ACC-Konto 1.2.1	ACC-Konto		Plan	06.08.2032
↗	4	<input type="checkbox"/> ACCOUNT 1	ACCOUNT		Aktiv	16.06.2015
↗	5	<input type="checkbox"/> Administrative General Ledger 1.0	Administrative General Ledger			
↗	6	<input type="checkbox"/> ADP Payroll US/CAN 3	ADP Payroll US/CAN			
↗	7	<input type="checkbox"/> AF Enterprise ConTrol 3.1	AF Enterprise ConTrol			
↗	8	<input type="checkbox"/> AF Enterprise ConTrol 4.0	AF Enterprise ConTrol			

Existing texts in primary language shown as placeholders

Applikationen > APP-404: ACC-Konto 1.2.1

Übersicht Businesskontext Informationskontext Mehr

Analysis View Bearbeiten

Basisdaten

Name: ACC-Konto Version: 1.2.1

Kurzbezeichnung: Alias:

Status: Genehmigt ICT-Objekt: ACCOUNT

Ist Variante von: Nicht definiert Autorisierter Anwender: John Customer

Beschreibung

Our main account management application.

Create data in non-primary languages...

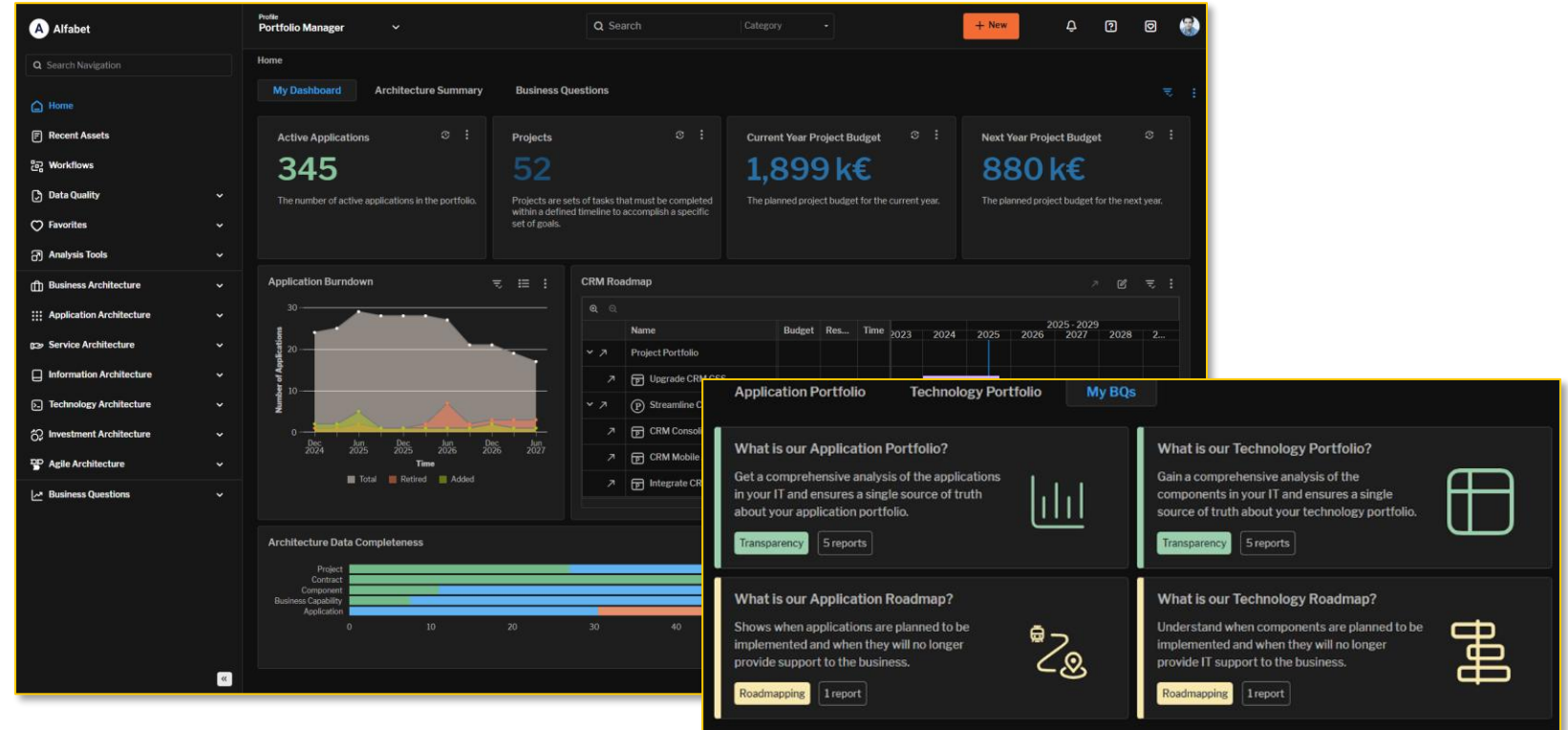
... in data workbenches, content areas and guided data entry views

Inline editing in currently selected UI language

Dark Theme

Less strain on the eyes and better highlighting of important information.

- When switching to dark theme, the following change automatically:
 - backgrounds
 - fonts
 - svg class/navigation icons
 - tables, table fonts, table borders
 - business chart axes
 - Gantt reports, Kanban reports
 - editors, wizards
 - toolbar icons



Default dark theme available
in Alfabet 11.9 Accelerator

Base newly created color
themes on dark mode

Colors and icons in standard
Alfabet configuration work in
dark themes.

Categorized Visual Items

Flexibly categorize and collate information in the end-user workspace

Name

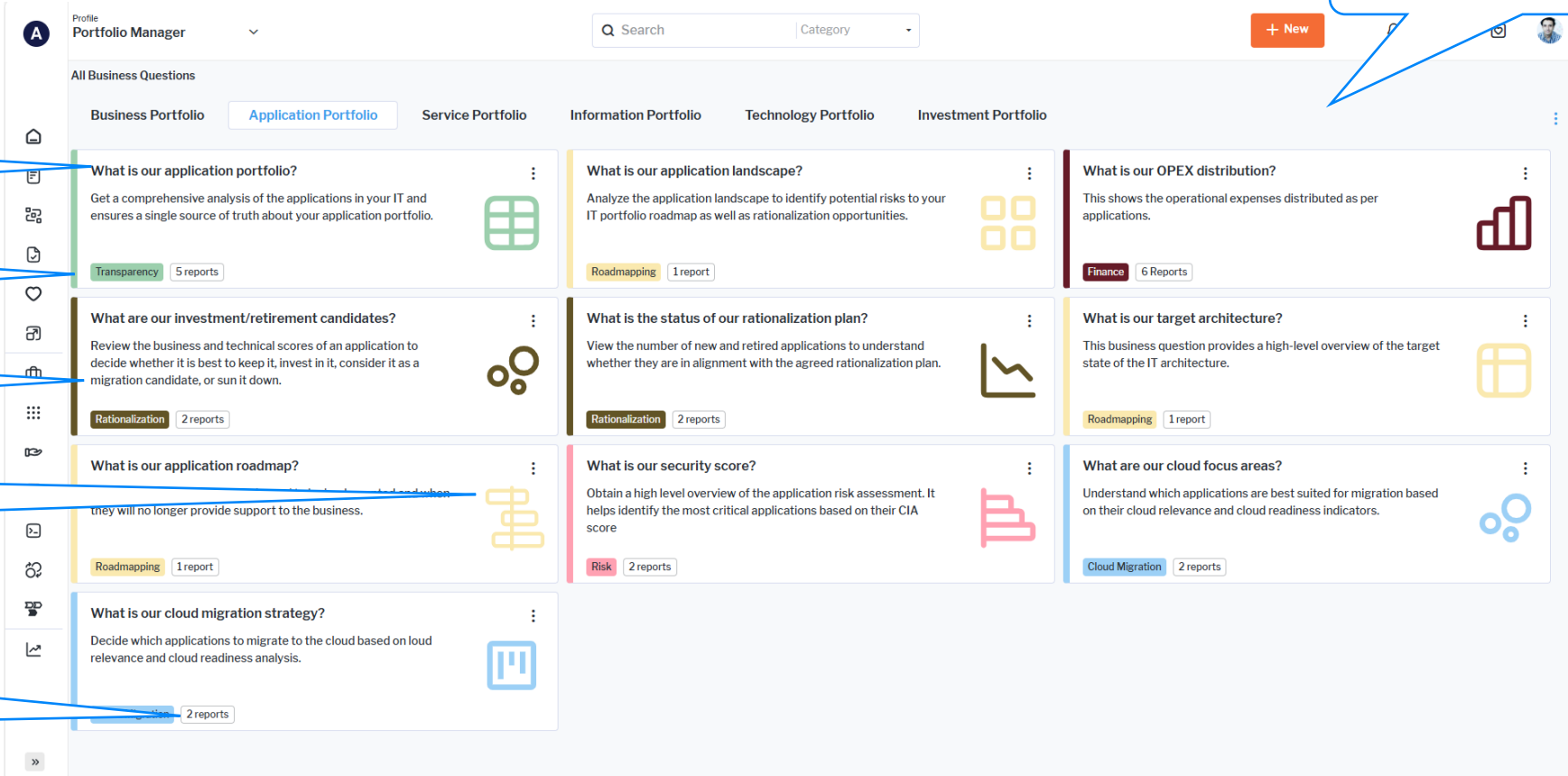
Category

Description

Coloring and icon

More information

Category preview



The screenshot shows a 'Portfolio Manager' interface with a sidebar on the left containing icons for home, documents, favorites, and reports. The main area is titled 'All Business Questions' and features a horizontal tab bar with 'Business Portfolio', 'Application Portfolio' (selected), 'Service Portfolio', 'Information Portfolio', 'Technology Portfolio', and 'Investment Portfolio'. Below the tabs is a grid of business questions, each with a title, description, category tag, report count, and icon. The questions are: 'What is our application portfolio?' (Transparency, 5 reports, green grid icon), 'What are our investment/retirement candidates?' (Rationalization, 2 reports, orange circles icon), 'What is our application roadmap?' (Roadmapping, 1 report, yellow stairs icon), 'What is our cloud migration strategy?' (2 reports, blue document icon), 'What is our application landscape?' (Roadmapping, 1 report, yellow squares icon), 'What is the status of our rationalization plan?' (Rationalization, 2 reports, orange line graph icon), 'What is our security score?' (Risk, 2 reports, pink stairs icon), 'What is our OPEX distribution?' (Finance, 6 Reports, red bar chart icon), 'What is our target architecture?' (Roadmapping, 1 report, yellow grid icon), and 'What are our cloud focus areas?' (Cloud Migration, 2 reports, blue circles icon). A '+ New' button is in the top right. A 'Category preview' callout points to the 'Application Portfolio' tab.

Preview first – then decide to navigate

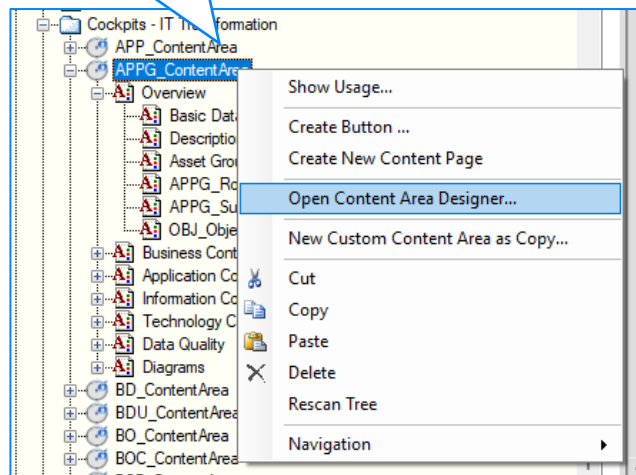
Use for organizing categorized concepts like business questions

Add visual item to content repository and organize into desired sections

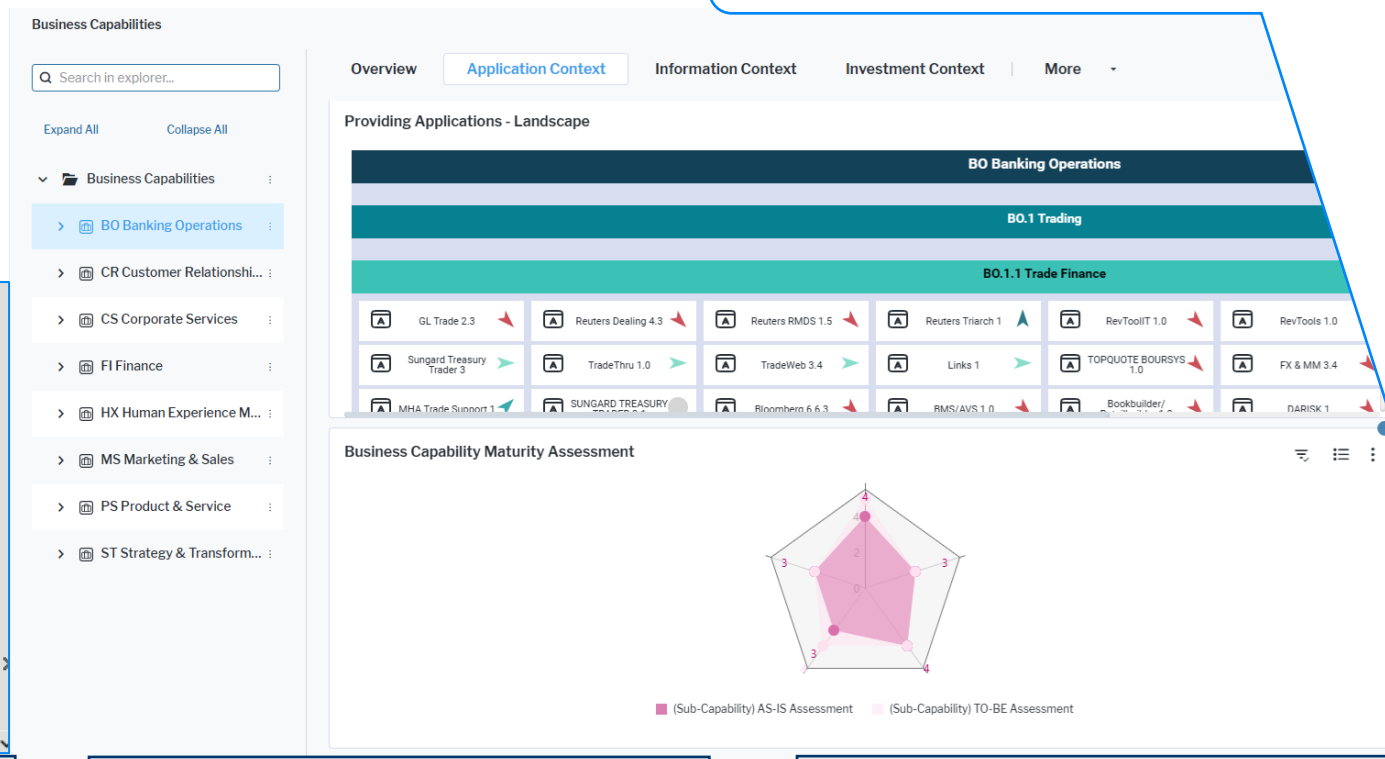
Content Area Designer

Easily configure and merge configurations between Alfabet Expand and end users

Content Area Designer in Expand



Create pages, add and arrange content items in Alfabet Expand



New content item in user's configuration denoted with dot

Merge Expand config with user's config without reverting user changes

New content items and new content pages are marked with a dot

Class-level Operations in Data Workbenches

Use standard generic operations on the Alfabet meta-model to manage data more efficiently

The screenshot displays the Alfabet Data Workbench interface. On the left, the 'Meta-Model' tree shows the hierarchy of classes, with 'CreateAndAddRelation: Create Subordinate Organization' selected. The main window shows the configuration for this operation. The 'Name' field is highlighted, and a callout box points to it. The 'Subordinate Organizations' table lists various organizations, and a callout box points to the 'Create Subordinate Organization' button in the table's context menu.

Enable operations at class level

Organization	Short Name
First Direct	FD
All Insurance	AI
Opti Retail	OR
Headquarters	HQ
Wilmer & Partner Investments	W&P I

Generic operations:
Create, Edit, Delete, Move
(incl. relationships)

Confirmation messages
can be set for all
operations

Dedicated operations for
Person and Business Data
Usage classes

Calculated Properties

Render information in data workbenches and content areas faster

Run-time calculation of # of local components and costs for applications

SQL query

Application

- Properties
- Calculated Properties
 - QA_NumberOfLocalComponents
 - QA_CumulatedCosts
 - QA_StringTest
 - QA_DateTest

				Object State	# Local Components	Cumulated Costs	String Calculation	Date Calculation
				All	- Q	Q	Q	Q
			AI 4.0	Retired	25	2,751.00	APP-10: (Retired) SAP@AI 4.0	2026-09-29
↗	2	<input type="checkbox"/>	GEVA 1	Active	3	5,288.00	APP-100: (Active) GEVA 1	2031-01-09
↗	3	<input type="checkbox"/>	Profit and Loss Stat...	Active	5	5,252.00	APP-101: (Active) Profit and Loss Stateme...	2030-06-07
↗	4	<input type="checkbox"/>	GFM Sales 5.1.1	Active	13	7,466.00	APP-102: (Active) GFM Sales 5.1.1	2030-07-01
↗	5	<input type="checkbox"/>	GGM 1.0	Active	3	4,932.00	APP-103: (Active) GGM 1.0	2030-01-10
↗	6	<input type="checkbox"/>	GL Trade 2.3	Active	7	3,882.00	APP-104: (Active) GL Trade 2.3	2025-10-12
↗	7	<input type="checkbox"/>	Global Watch List 1...	Active	6	4,794.00	APP-105: (Active) Global Watch List 110.3	2032-02-09
↗	8	<input type="checkbox"/>	GLOSS BUREAU 5.0.1	Active	25	3,379.00	APP-106: (Active) GLOSS BUREAU 5.0.1	2031-12-09
↗	9	<input type="checkbox"/>	GOBA 1.0	Active	2	4,677.00	APP-107: (Active) GOBA 1.0	2033-01-10
↗	10	<input type="checkbox"/>	GUARD/Evidence 1.0	Active	3	4,492.00	APP-108: (Active) GUARD/Evidence 1.0	2026-09-16

Create with an SQL query defining a database view for storage

Database view calculates the values at runtime

Use to calculate non-numeric values such as dates and references

Other Enhancements

- **Advanced Range Definitions on Class Properties:** When defining drop-down lists for reference and string properties, ranges can be defined according to the context of the target object. Limiting the available choices can improve usability and data quality.
- **Keyboard Navigation:** In a step towards 508 compliance, Alfabet now supports keyboard navigation. Users need to know only a small number of key combinations to perform major actions on the user interface.
- **Combo Box Tooltips:** Tooltips are displayed for values in drop-down fields in data workbenches, content areas, and editors. Tooltips show the available options.
- **Enumerations for Integers:** Enumerations are now supported for integer values (in addition to string values).
- **SCIM Management for User Groups:** SCIM is a standard for cross-domain identity management and an important part of identification management in cloud environments. Alfabet 11.9 supports SCIM management with Okta® or AzureAD® as the identity provider. SCIM integration pushes user data from the identity provider to the Alfabet database, updating the user information regularly. New users are added to the Alfabet database as anonymous users. The user profile assignment is updated based on identity provider group affiliation. A web-based SCIM management application is available for administration.

Thank you.

