



Bizzdesign

What's New in Alfabet 11.11

GA: March 2025

Strategic Initiatives for Alfabet

Flexible and consistent
**dashboarding/
reporting**

Data filtering and **scope
sharing**

Easy and guided **data
entry**

Functional richness of
Alfabet 10 and beyond

Intelligent &
contextualized **Help**

Intuitive and web-based
solution configuration

Plug and play
integrations

Performant and **modern
system**

Alfabet 11.11 Release Highlights

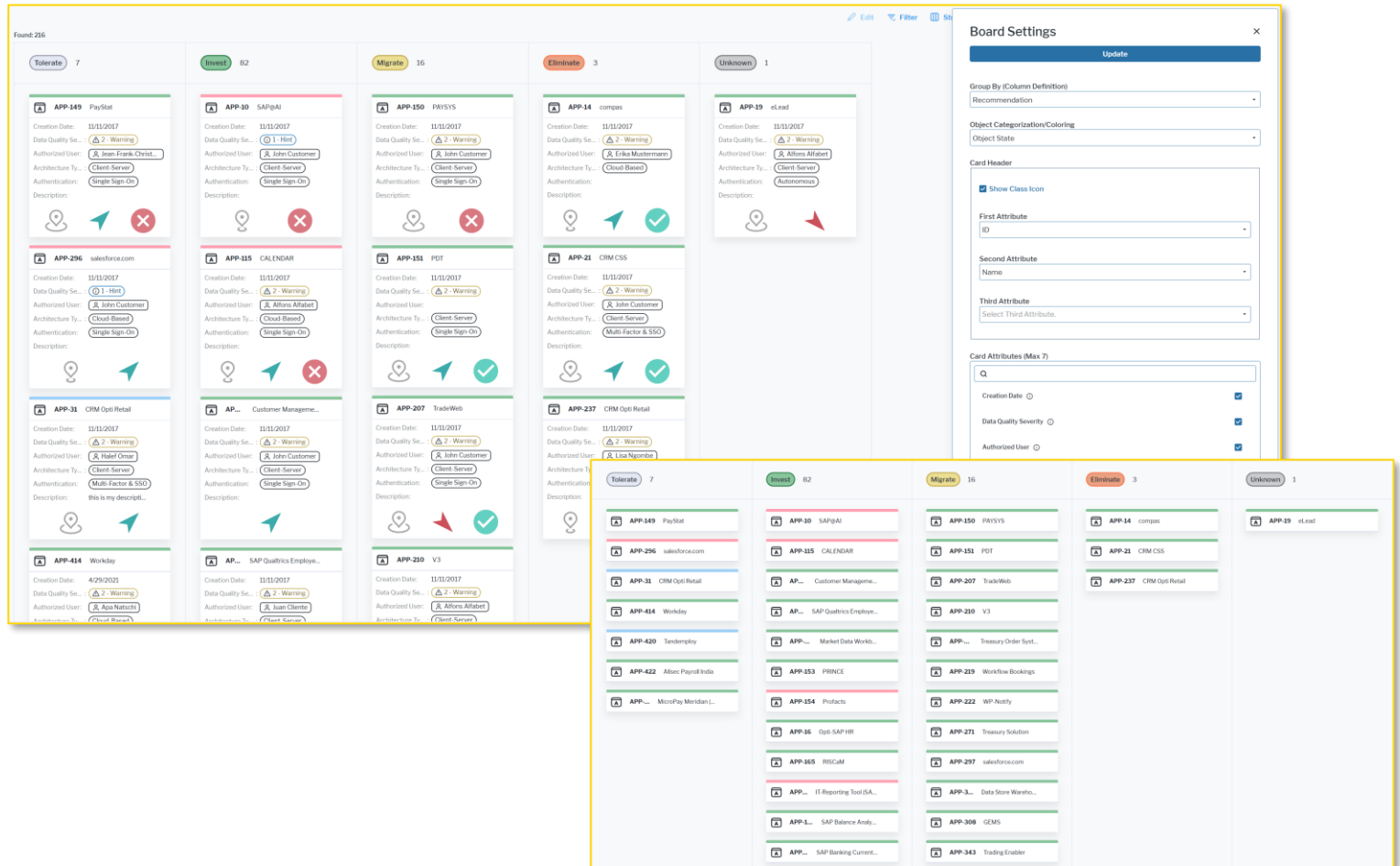
Release Highlights:

- Board Visualization
- User Collaboration and Comments
- Embedding of External Content
- Resource Planning and Management
- Alfabet Publication Framework
- Business Question: “How are we executing our strategy?”
- Business Question: “What is our investment landscape?”
- User and Platform Enhancements



Board Visualization

- **Dynamic Layout & Grouping:** Users can toggle between **Expanded and Collapsed modes** and organize data by grouping specific properties, indicators, or non-pluralistic roles.
- **Visual Customization:** Cards can be **color-coded** based on enum or indicator range colors. Card content can include properties, indicators and indicator icons.
- **Interactive Editing:** The interface supports **drag-and-drop** functionality for quickly updating property values, indicator levels, and role assignments.
- **Deep Inspection:** Users can access detailed **object inspection** for both the primary card and any associated object badges displayed within it.



User Collaboration and Comments

- **Modernized Collaboration:** Alfabet's collaboration feature is back, featuring a sleek UI/UX with @mentions, file attachments, and collapsible threads. Continue effortless teamwork with full backward compatibility.
- **Topic-Driven Dialogue:** Get productive with structured, topic-based discussions that allow users to organize multiple posts under clear headings or pivot between strategic conversations instantly.
- **Enhanced Engagement & Reach:** Drive platform adoption across the business with automated email notifications that keep architects and stakeholders connected to vital updates and cross-role discussions.

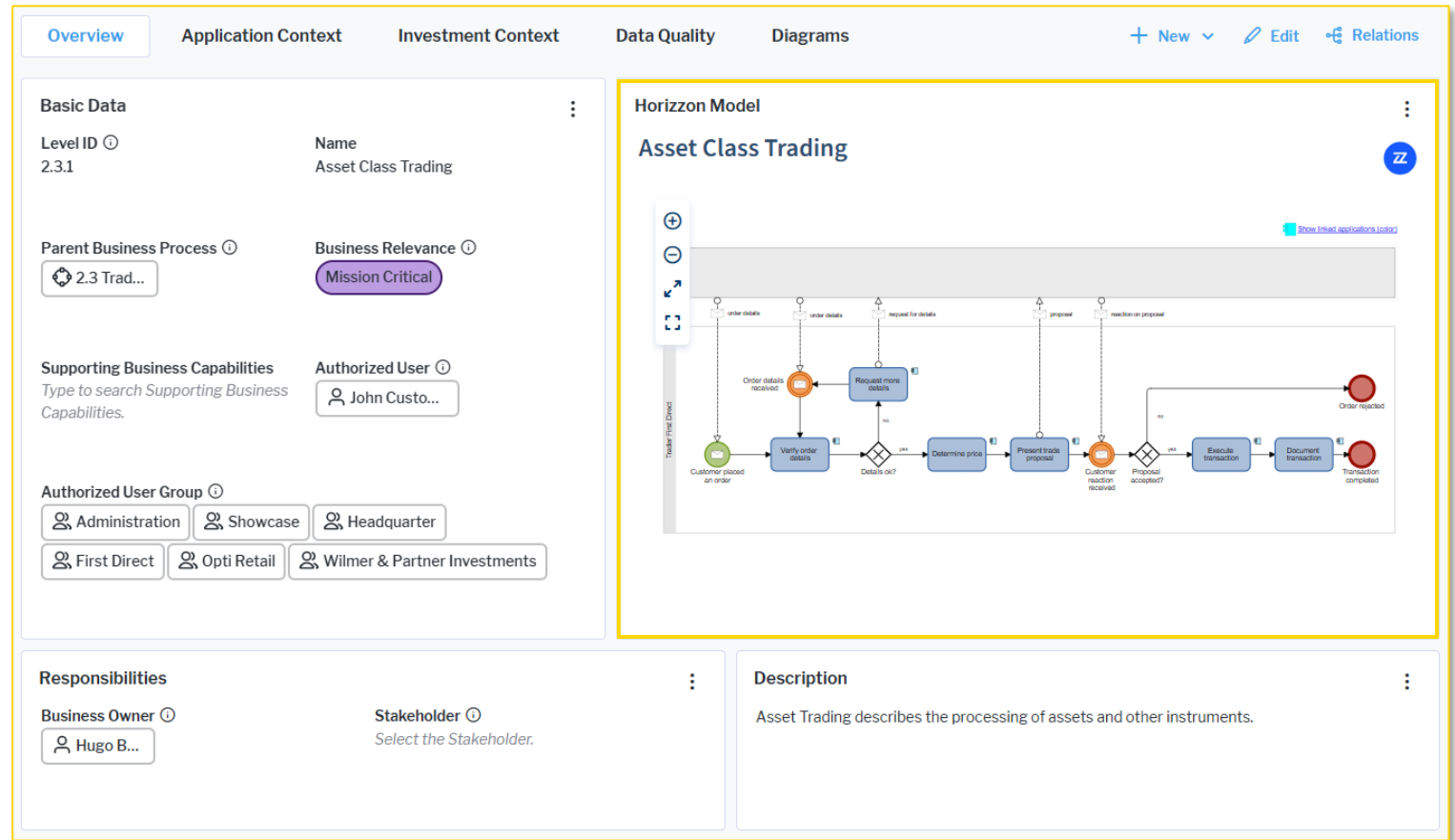
The screenshot displays a collaboration tool interface. On the left, a grid titled "Business Capabilities and Application Support" is organized into two main columns: "BO Banking Operations" and "CR Customer Relationship Management".

- BO Banking Operations:**
 - BO.1 Trading:**
 - BO.1.1 Trade Finance:**
 - AI-Miner 1, Bloomberg 6.6.3, BMS/AVS 1.0, Bookbuilder/Retailbuilder 1.0, DARISK 1, EastTrade Web 2.1, FX & MM 3.4, GL Trade 2.3, Links 1, MHA Trade Support 1, Reuters Dealing 4.3, + 12 more
 - BO.1.2 Cash Management:**
 - AI-Miner 1, FX & MM 3.4, GL Trade 2.3, MHA Trade Support 1, Support Treasury
 - CR Customer Relationship Management:**
 - CR.1 Customer Success Management:**
 - CRM CSS 3.2, Customer Opinion DB 6.1.4, Gainsight 1, salesforce.com 1.0, salesforce.com 2.0
 - CR.1.1 Customer Onboarding:**
 - CRM Business Intelligence Platform 1, CRM CSS 3.2, Gainsight 1, Gainsight 2, Hubspot 1, salesforce.com 4.0, SAP Customer Experience C/4, Zendesk 1
 - CR.1.2 Customer Roadmap/ Plan Definition:**
 - CRM Business Intelligence Platform 1, Gainsight 1, Gainsight 2, Hubspot 1

On the right, a "User Comments" section shows a thread. The top comment is by John Customer, dated 4/27/2026 9:02:57 PM, with the text: "Review OpEx for all applications supporting customer success management" is created. Hello Apa Natschi, We should review all applications that have a yearly running cost of more than €50K for CR1 Customer Success Management business capability. Could you please create a list of applications that fall in this criteria for a management review. Thanks". The bottom comment is by Apa Natschi, dated 4/27/2026 9:06:03 PM, with the text: "Hi John Customer, here is a list of all applications that have with OpEx more than €50K per year. I have also marked applications that are nearing their end of life." Below the comments is a rich text editor with a toolbar and a "Reply" button.

Embedding of External Content

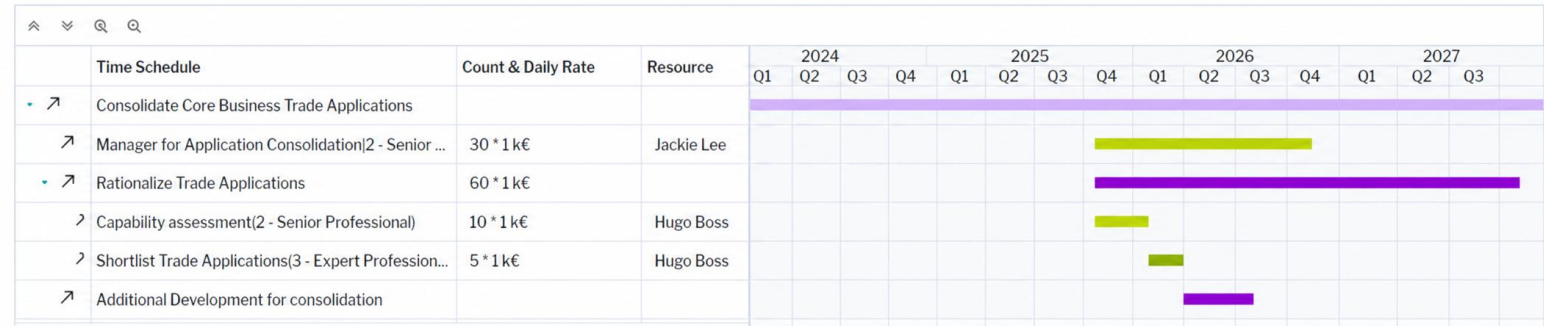
- **Your Unified Strategic Platform:** Transform Alfabet into your organization's primary entry point by centralizing portfolio, financial, and asset data from multiple external tools into a single, cohesive view.
- **Seamless In-Context Insights:** Eliminate constant tab-switching with embedded external views that display live content directly in Alfabet and significantly boost user adoption and operational efficiency.
- **Flexible & Secure Integration:** Effortlessly source external content via static URLs or object properties, all while maintaining enterprise-grade security through robust sandboxing and content permissions.



Resource Planning

- New Work Breakdown Structure (WBS):** A new Gantt view delivers a clear project hierarchy and early resource demand outlook, enabling more structured, transparent, and methodologically aligned planning.
- Enhanced Request and Resource Structure:** Consistent defaults, standardized naming, and nested skill requests, improves traceability and top-down planning reliability.
- New Project Resource Planning View:** A new Gantt view that is aligned with the WBS for detailed, bottom-up planning, including advanced creation and splitting of skill requests for more precise scheduling.
- Improved Business Case Cost Integration:** New functionality pulls costs from the correct level of detail, ensuring accurate calculations while avoiding double counting and reflecting sub-project costs.

Work Breakdown Structure



Project Resource Planning



Projects > PRJ-2: Consolidate Core Business Trade Applications [Financials] > PRJ-2: Consolidate Core Business Trade Applications (Business Case)

Monetary Type	Currency	2026	2027	Comment
Savings on Infrast...	k€			
Savings on License ...	k€	10.00	200.00	200.00
Savings on Mainten...	k€			
Savings on Service ...	k€			
Savings Other	k€			
CapEx Other	k€			
Infrastructure Cost	k€			
OpEx Other	k€		5.00	
Service Cost	k€		11.62	68.38
Software License C...	k€	300.00	100.00	100.00
Software Maintena...	k€			55.00

Alfabet Publication Framework

- **Seamless Feature Continuity:** Alfabet's Document Publication capability returns in version 11, ensuring your publications perform exactly as they did in the previous version.
- **Upgrade with Confidence:** Existing publication templates require little to no adjustment, functioning immediately as long as the meta-model remains unchanged.
- **Preserved Configuration:** Maintain full control over your publication templates with the same configuration options you trust. Publication view now has a default data-set based layout for ease of access.

The screenshot displays the Alfabet Publication Framework interface. At the top, the breadcrumb navigation shows 'Applications > APP-295: ACCOUNT > APP-295: ACCOUNT (Application Publications)'. Below this, there's a navigation bar with 'Application Overview' selected, a 'Single Document' checkbox, and buttons for 'Publish', 'Download Publication', and 'Delete Publication'. A table lists application publications with columns for User, Name, Size (KB), Creation Date, Expiration Date, and Legacy. The table contains one entry for 'Alfabet' with a size of 306.19 KB, created on 1/29/2026, and expiring on 2/28/2026. Below the table is a 'Column Filters' section. An inset window shows a detailed view of the 'Application Overview_ACCOUNT_202...' document. This view includes sections for 'Basic Info', 'Overview', 'Responsibilities', 'Application Statistics', and 'Application Assessment Overview'. The 'Overview' section lists details like Name (ACCOUNT), Version, Active Period, Lifecycle Status (Approved as of 09.03.2026), Functional Domain (Account Plan Definition), and Description (Our main account management application). The 'Responsibilities' section lists roles like Architect(s), Business Analyst(s), Data Manager, Security Manager, and Provider(s), along with Stakeholder(s). The 'Application Statistics' section shows Information Flows (44), Components (5), Active Business Supports (2), and Involved in projects. The 'Application Assessment Overview' section states that KPIs are aggregated from detailed assessments.

	User	Name	Size (KB)	Creation Date	Expiration Date	Legacy
➤	Alfabet	ApplicationOvervie...	306.19	1/29/2026	2/28/2026	All

Basic Info

Overview

Name: ACCOUNT
Version:
Active Period:
Lifecycle Status: Approved (as of 09.03.2026)
Functional Domain: Account Plan Definition
Description: Our main account management application.

Responsibilities

Architect(s):
Business Analyst(s):
Data Manager:
Security Manager:
Provider(s):
Stakeholder(s):

Application Statistics

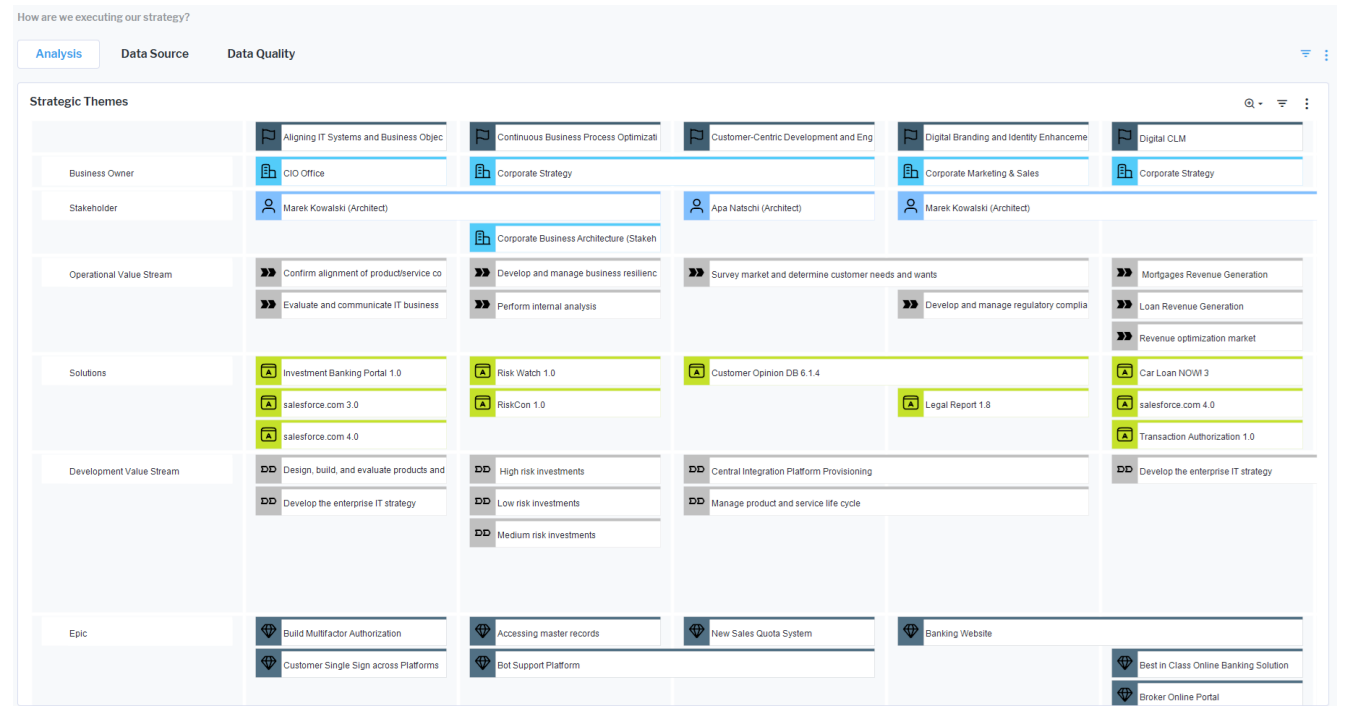
Information Flows: 44
Components: 5
Active Business Supports: 2
Involved in projects:

Application Assessment Overview

The following KPI are aggregated automatically from the detailed assessments on the application.

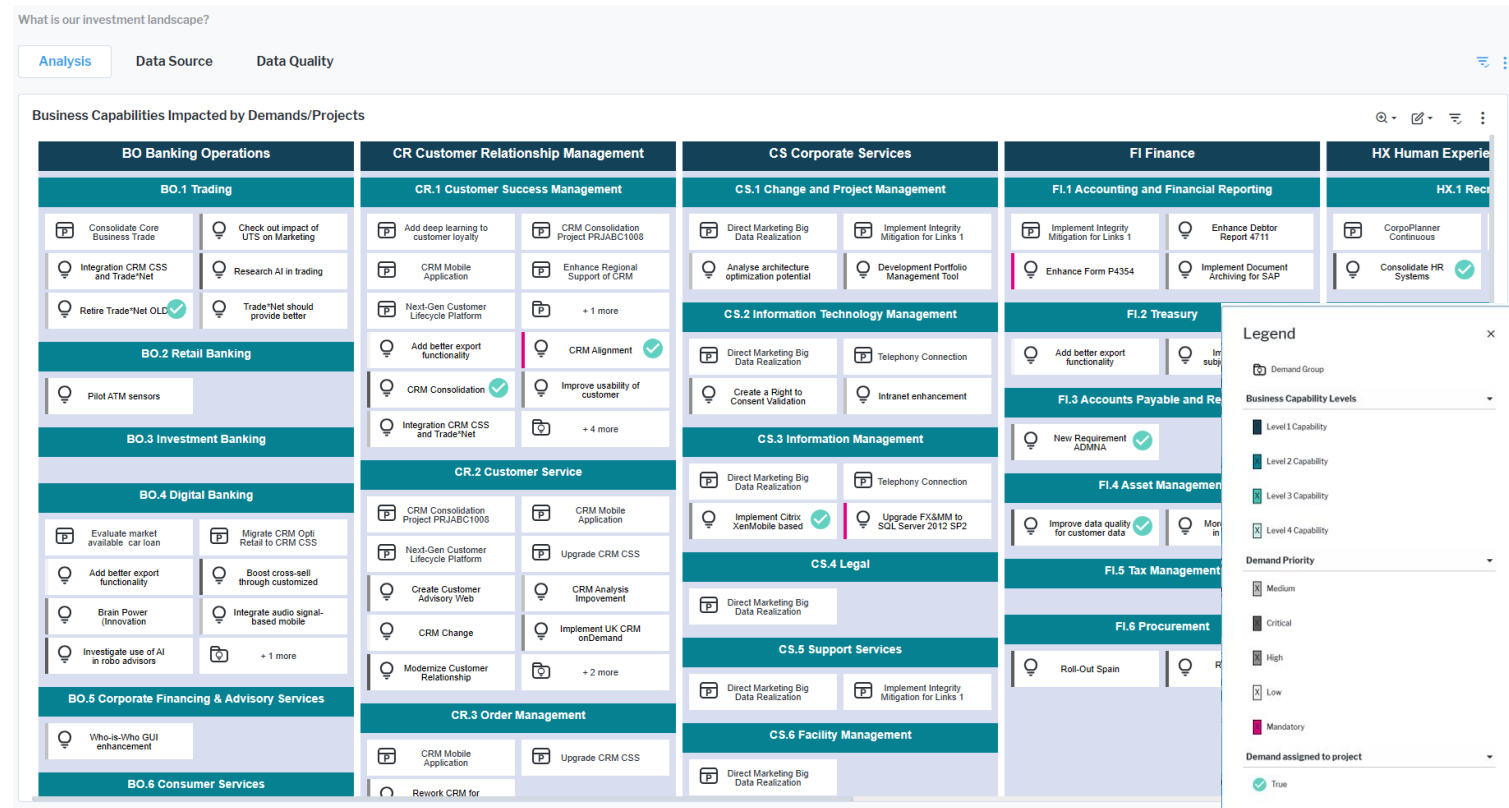
Business Question: “How are we executing our strategy?”

- Detailed overview on how high-level strategic themes are executed in the context of an agile methodology
- Strategic themes are on the X-axis and are mapped to their stakeholders and the operational and developmental value streams, epics, and agile release trains (ARTs) that contribute to the strategy
- Understand which core strategies are being supported, where gaps or misalignments exist, and how investment and capacity are distributed across the portfolio
- The visualization helps decision-makers gain the clarity needed to steer the portfolio toward the outcomes that matter most for the company’s long-term direction and value delivery

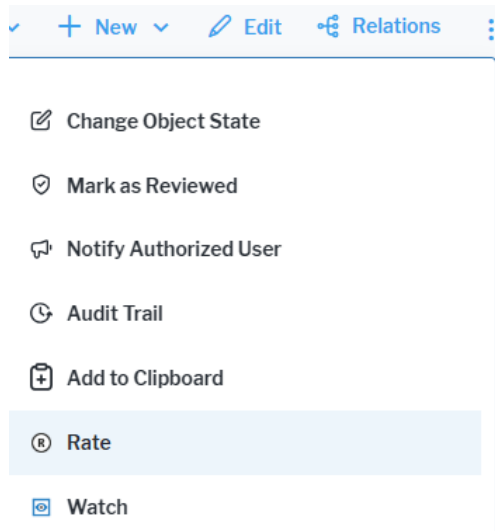


Business Question: “What is our investment landscape?”

- Shows the organization's business capabilities and the demands and projects that impact them
- Exposes overlaps and redundancies of investments and helps to eliminate waste and improve coherence
- Prioritize more rationally and with transparency, ensuring that resources are directed toward the initiatives that most effectively enhance the company’s ability to execute its strategy
- Understand which initiatives strengthen critical business capabilities to be able to focus investment where it creates the greatest long-term value and ensure alignment with strategic priorities.

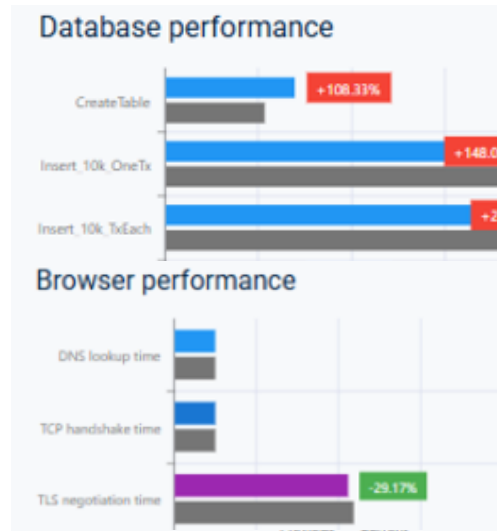


User experience and platform enhancements



Rate, like, and follow objects

- Interact with objects and generate meaningful reports around object utilization.



Performance Benchmark (Beta)

- Generate platform performance reports and compare results.



Login Screen (Warning)

- Display compliance-related screens prior to user login.

IT-Pedia Product Selector

Import Products From: IT-Pedia® Catalog - Models My Products - Models

Product: Version:
Manufacturer: Model:

#	<input type="checkbox"/>	Product	Version	Edition	Manufact...	Category
1	<input type="checkbox"/>	Outlook Ex...	3.2	*	Microsoft	Unified Co...
2	<input type="checkbox"/>	Outlook Ex...	5.60	*	Microsoft	Unified Co...
3	<input type="checkbox"/>	Outlook Ex...	5.9	*	Microsoft	Unified Co...
4	<input type="checkbox"/>	Outlook Ex...	6.0	*	Microsoft	Unified Co...
5	<input type="checkbox"/>	Outlook Ex...	9.1	*	Microsoft	Unified Co...
6	<input type="checkbox"/>	Outlook Ex...	5.01	*	Microsoft	Unified Co...

Column Filters

Streamlined IT-Pedia Selector

- Identify matching components directly in the IT-Pedia selector.

Other Enhancements

- **Quick Access to Recently-Searched Objects:** The global search field in the masthead now displays a **Recent Objects** section, making it easy for users to return to frequently accessed items.
- **Sharing of User Content:** Data workbench visualizations added to the content repository of content areas can be shared with other users. This sharing capability can now be disabled for specific user profiles through a new **Enable Users to Share Content Items** attribute in the user profile configuration.
- **Easy AI Assistant Access Control:** The Alfabet AI Assistant can be deactivated for specific user profiles in the **User Profile** editor directly in the Alfabet user interface, giving administrators fine-grained control over its availability.
- **Improved AMM File Generation:** The AMM generation editor has been enhanced with a new setting that allows users to **exclude objects** tagged with one or more selected tags.
- **Usability Enhancements for Class Settings:** The display of modified controls in editors, custom editors, and standard views within the Class Settings explorer has been updated to show both the control's Name and Caption.
- **Enhanced Logging for SAML:** If authentication is done via SAML, the Alfabet Web Application will enforce the SAML component to provide log messages with the debug log level. This ensures that certificate information relevant for support is logged correctly.

Thank you.