

Alfabet

Alfabet 11.9

Product Announcement

July 2025



ABOUT ALFABET / BIZZDESIGN

Trusted by global industry leaders, Alfabet provides the tools to plan and execute digital transformation with precision—ensuring that IT not only supports but drives business success. Whether it's streamlining operations, mitigating risks, or fostering sustainable growth, our solutions deliver measurable value. Backed by a passionate and innovative team, we are committed to enabling enterprises to thrive in today's dynamic digital economy.

Alfabet is part of the Bizzdesign Group, a global leader in enterprise transformation, providing the expertise and solutions needed for sustainable, future-ready success.

© 2025 Alfabet BD GmbH. All rights reserved. Alfabet BD GmbH and all Alfabet BD GmbH products are either trademarks or registered trademarks of Alfabet BD GmbH. Other product and company names mentioned herein may be the trademarks of their respective owners.

Introduction

Alfabet 11.9 is another milestone in the product's transformation into a future-fit platform meeting the needs of a broad base of IT planning and portfolio management stakeholders. This new release offers many new features to make information capture, management and analysis easier and more in tune with users' natural behavior. Other features embody our goal of making Alfabet the most modern and performant strategic portfolio management product available.

Here are the highlights of Alfabet 11.9:

- **Guided Data Entry in Workflow:** Provide users direction when performing their individual workflow steps with input masks, inline editing and instant data quality feedback.
- **Multi-language Support:** Capture data in non-primary languages in data workbenches, content areas and guided data entry views to support a global and geographically diverse workforce.
- **Dark Theme:** Use Alfabet in a dark mode with light text on a dark background for strain on the eyes and better highlighting of important information.
- **Categorized Visual Item:** Flexibly categorize and collate information in the end-user workspace to better organization available information.
- **Content Area Designer:** Easily configure and merge configurations between Alfabet Expand and end users using Alfabet Expand's Content Area Designer.
- **Class-level Operations:** Manage data more efficiently by using standard generic operations on the standard Alfabet meta-model to enable operations at class as well as object level.
- **Calculated Properties:** Render information in data workbenches and content areas faster by using Calculated Properties to calculate values at runtime.
- **Advanced Range Definition:** Improve usability and data quality by defining ranges for reference and string properties more precisely in drop-down lists.

Alfabet 11.9.1 will be available a few weeks after delivery of Alfabet 11.9. It will include the following new Accelerators:

Agile Transformation: Document operational and development value streams to align across the enterprise and improve visibility into how value flows from concept to delivery to support better decision-making, investment prioritization, and Lean Portfolio Management in accordance with SAFe. Introduces two new stereotypes for Value Streams: Operational Value Stream and Development Value Stream.

Cost Prediction: Use historical data from similar projects to better predict costs when building business cases for projects and guide go/no-go decisions. Predicted application costs help optimize the application portfolio with more accurate cost estimates.

AI Portfolio Management: Have full transparency over where AI is being using in the organization and establish responsible AI practices by understanding the AI risk profile and achieving compliance to AI regulations.

Guided Data Entry in Workflows

Automated workflows provide many benefits to the enterprise: Integration of enterprise architecture (EA) and strategic portfolio management (SPM) into the whole organization; better IT/business collaboration; stage gate process integrity; information currency and accuracy; IT governance; and orchestrated process automation. Above all, they guide stakeholders in their role in IT planning and portfolio management. They should thus be easy to use and be part of an enjoyable user experience. Further, EA and SPM find their purpose in providing the insights that inform change decisions and instilling confidence in choosing a new way forward. Data quality is one of the biggest concerns around an EA/SPM implementation. Current and correct information is essential for critical decisions and stakeholders should have the means to easily capture and maintain accurate data.

Alfabet 11.9's new guided data entry views provide users direction when performing their individual workflow steps. They are aligned with Alfabet 11's general user experience in enabling inline editing and instant data quality feedback.

On a workflow step, users can choose between an Analysis View (the content area containing e.g. diagrams and tables associated with the workflow step) and the Data Entry View using a toggle button at the top right of the display. In the Data Entry View, the user sees the fields awaiting data entry. A panel to the right informs the user as to the quality of the data in the fields.

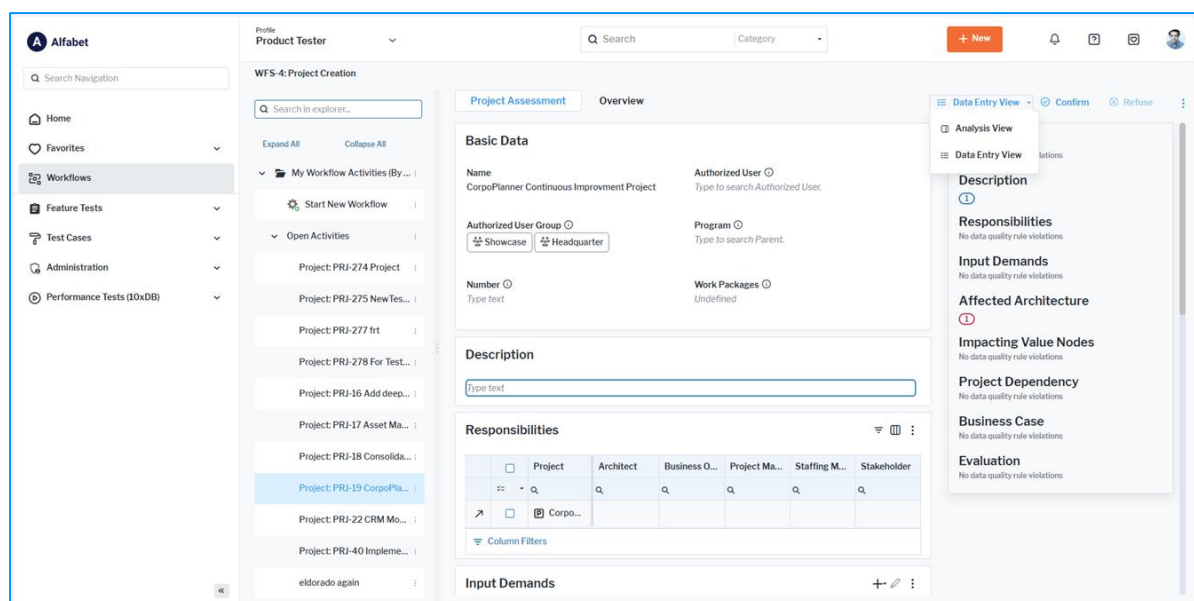


Figure 1: Choosing "Data Entry View" on the top right toggle tab, opens an entry mask for easily entering required information, as well as a quality panel indicating whether there is a problem with the quality of the input data and describing what that problem is.

Multi-language Support

Today's global and geographically diverse workforces require software features that allow them to understand exactly and communicate precisely as part of the enterprise transformation community of stakeholders.

Alfabet 11.9 now enables creation of data in a non-primary language. Users can capture data in data workbenches, content areas and guided data entry views via inline editing and directly in the language that is currently selected for the user interface. If data already exists in the primary language in the database table of the object class, the original value is displayed in the respective field as a placeholder text which can be overwritten by the user in the non-primary language.

Gefunden: 436

Applikation	Name	Kurzbezeich...	Objektstatus	Startdatum	Enddatum	Status	Empfehlung	Architektur-Typ
Q	Q	Q	All	Q	Q	All	All	All
1C Payroll RU 3.2	1C Payroll RU		Aktiv	15.01.2019	15.01.2026	Genehmigt	Tolerieren	
ACCOUNT 1	ACCOUNT		Aktiv	16.06.2015	09.01.2024	Genehmigt	Unbekannt	Externe Webseite
ACCOUNT 1.2	ACCOUNT		Aktiv	10.01.2024	04.08.2032	Genehmigt	Invest	Cloud-basiert
ACCOUNT 1.2.1	ACCOUNT		Plan	06.08.2032	28.02.2041	Genehmigt	Invest	Cloud-basiert
Administrative General Ledger 1.0	Administrati...	AGL	Aktiv	15.11.2020	09.06.2029	Genehmigt	Tolerieren	Verteilt
ADP Payroll US/CAN 3	ADP Payroll ...		Plan	14.12.2015	14.12.2026	Genehmigt	Invest	
AF Enterprise ConTrol 3.1	AF Enterpris...	AFECT	Stillgelegt	30.03.2018	25.09.2021	Entwurf	Migrieren	Mainframe
AF Enterprise ConTrol 4.0	AF Enterpris...		Aktiv	14.12.2017	08.07.2026	Entwurf	Tolerieren	Verteilt
AF Good Buy 2.0	AF Good Buy		Stillgelegt	11.09.2018	16.11.2021	Entwurf	Invest	Cloud-basiert
AF Good Buy 3.0	AF Good Buy		Plan	12.07.2025	13.12.2028	Entwurf	Tolerieren	Verteilt
AF HR Online EU 2.2 Var.	AF HR Online...	SAP HR HQ EU	Aktiv	30.03.2018	24.09.2022	Genehmigt		Verteilt
AF HR Online US 2.2 Var.	AF HR Online...	SAP HR HQ US	Aktiv	30.03.2018	24.09.2026	Genehmigt	Tolerieren	Verteilt
AF WorkPortal 1.0	AF WorkPortal	WorkPortal	Aktiv	09.08.2023	21.02.2026	Entwurf	Invest	Verteilt

Figure 2: Users can enter data in the non-primary language of the current display. Here, the display is in the non-primary language "German".

Dark Theme for User Interface

Alfabet now provides the user interface in a dark mode with light text on a dark background. Dark themes cause less strain to the eyes and are favorable in low light environments. They are also conducive to highlighting as light colors are more vibrant on a dark background.

A default dark theme is available for users in Alfabet 11.9 Accelerator. Customers using a preconfigured Alfabet 11.9 can base newly created color themes on dark mode. Colors and icons defined in the standard Alfabet configuration have been adapted to work for dark themes.

Upon switching to the dark theme, backgrounds, fonts and svg class/navigation icons across most of the platform change automatically to the dark setup as do tables, table fonts, table borders, axes of business chart reports, Gantt reports, Kanban reports, editors, wizards and toolbar icons.

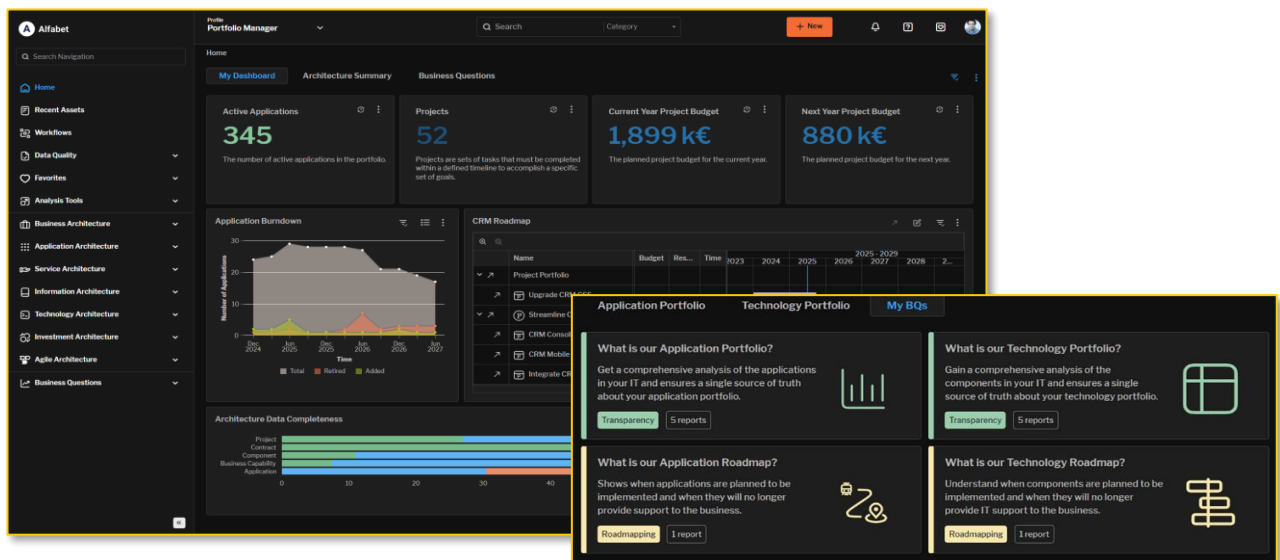


Figure 3: Alfabet 11.9 offers users a dark theme for display.

Categorized Visual Items

To better organization available information, Alfabet 11.9 allows creation and display of categories of information. Each tile is a category preview containing: category, text description, representative icon, specific category coloring, and how many reports are included in the category. Categories are especially useful for organizing categorized concepts like Alfabet's pre-configured business questions. Categories are freely definable as well.

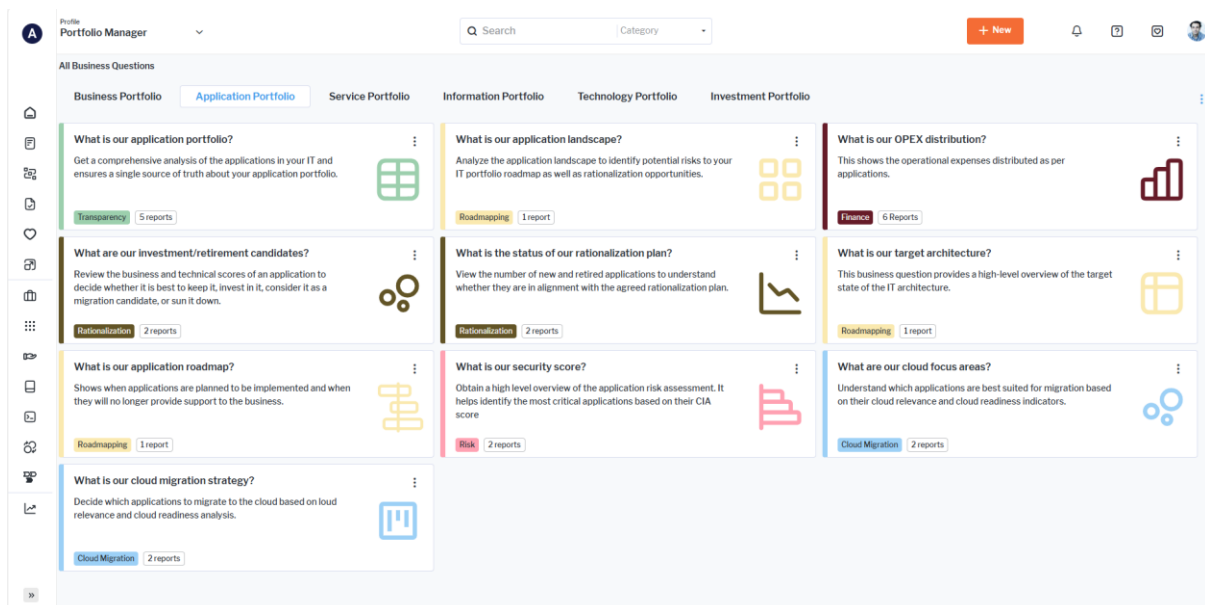


Figure 4: Alfabet 11.9 provides the means to categorize content to better organize, find and display information.

Content Area Designer

Alfabet's Content Areas are a powerful medium for fast-path access to needed information. They can be built as personalized dashboards with theme-oriented sections containing multiple reports and analytics views to gain a quick overview of the IT portfolio. They can also be used to capture portfolio information using class views with easy inline editing of object property values. Content Areas also provide at-a-glance information for object analysis from various architectural perspectives. Visual cues such as rule-based user alerts, icons as design elements and conditional field formatting assist data capture.

In Alfabet 11.9, content areas are now easier to configure and merging configurations between Alfabet Expand and the user has been improved. Solution designers can create pages and add and arrange content items in the Content Area Designer in Alfabet Expand. The configuration is stored in Alfabet Expand. If a solution designer changes an already existing and used content area, all changes are directly merged to the individual user's configuration without reverting changes done by the user. New content items are added as last elements to the content page without removing content items added by the user or changing re-ordering of the existing pages performed by the user. New content items and new content pages are marked with a dot in the upper right corner the first time the user accesses the changed content area. If content items or content pages are removed in Alfabet Expand, they are also removed from the content areas changed by the users without affecting the rest of the user configuration.

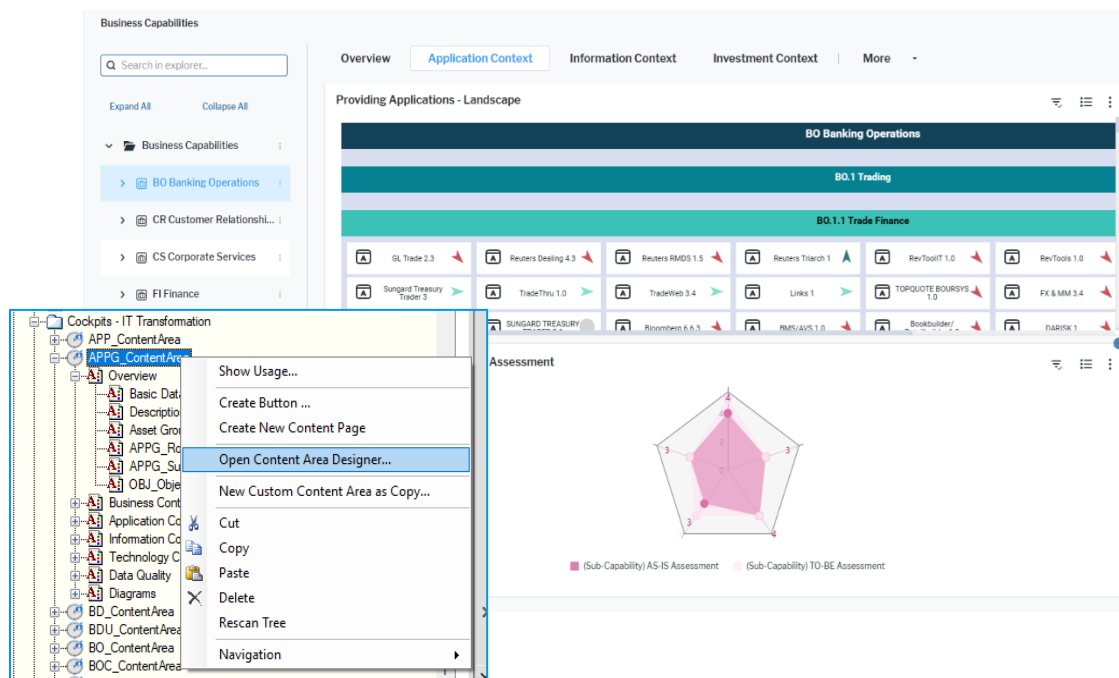


Figure 5: Alfabet's new Content Area Designer coordinates changes to Content Areas done by the solution designer and the individual user.

Class-level Operations

In the new Alfabet 11.9, standard generic operations have been added to the standard Alfabet meta-model to enable operations at class level inside data workbenches in addition to object level inside content areas. Generic operations include creating interface systems for the class InformationFlow, defining business data usage for the class BusinessDataUsage, managing user authentication for the class PERSON, and basic editing, deleting and creating objects is available at the class level or all public and protected classes.

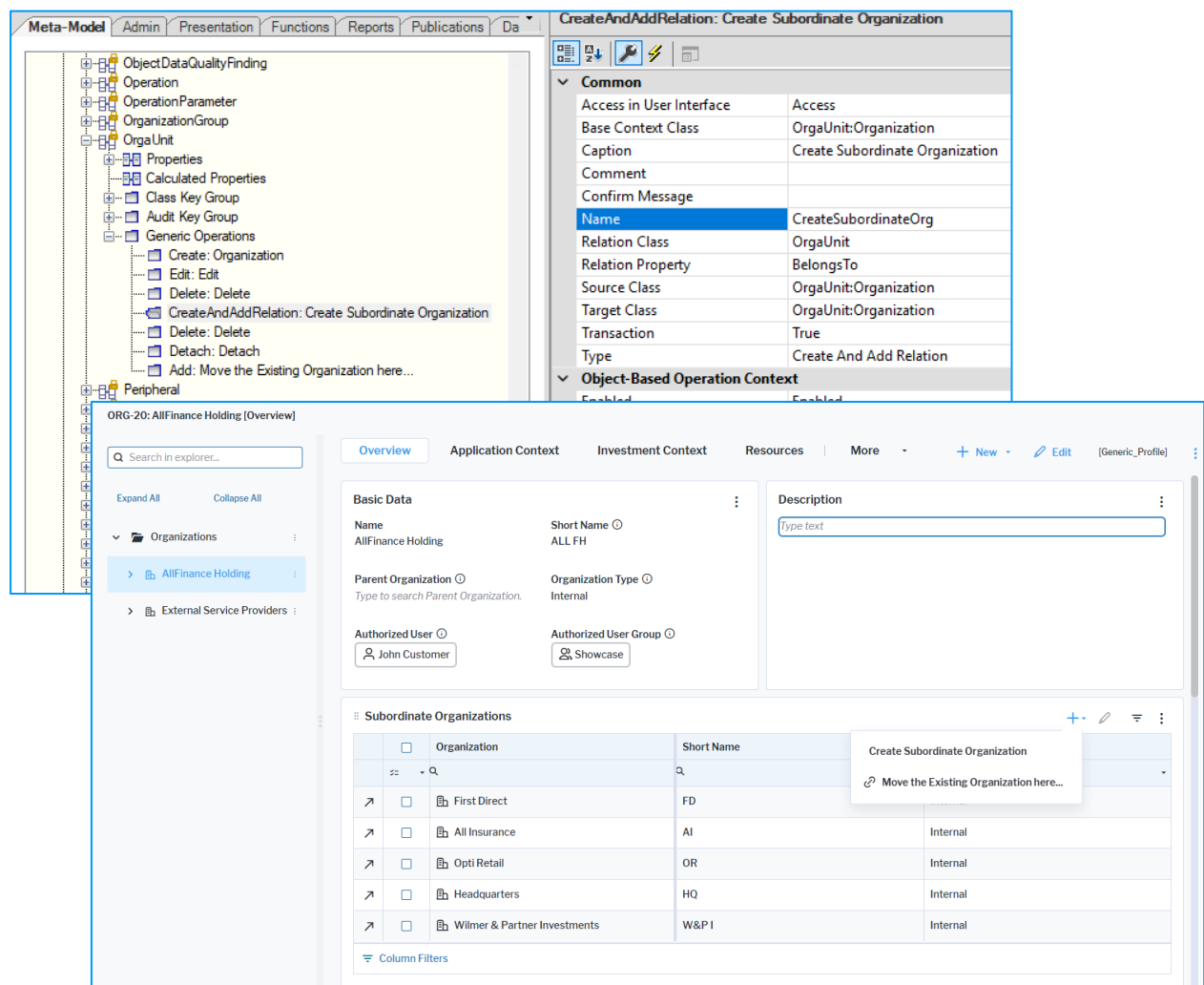


Figure 6: Alfabet 11.9 provides generic operations at class level to easier define operations across objects.

Calculated Properties

New in Alfabet 11.9 are calculated properties enabling faster rendering of information in data workbenches and content areas. Users create a calculated property with an SQL query which defines a database view for storing the calculated values. The database view calculates the values at runtime. Calculated properties can be used to calculate non-numeric values such as dates and references, for example “minimum start date and maximum end date for all applications in an application group” or a textual summary of the key information on an object’s superordinated ICT Object. Calculated properties provide a fast and reliable display of up-to-date values without having to trigger an update via button interaction.

Advanced Range Definition

Alfabet 11.9 enhances the method for defining drop-down lists for reference and string properties. Ranges for the property can be defined according to the context of the target object. Examples are:

- For a planned application it is useful to limit possible information flow targets to other active or planned applications as it doesn’t make sense to link to an already retired application.
- The list of users who are allowed being the responsible user of an application might depend on various criteria like supported capabilities or the security level of the application.

Advanced Range Definition limiting the available choices can improve usability and data quality.

Miscellaneous

- **Keyboard Navigation:** The Alfabet user interface has been enhanced to support keyboard navigation. This is an important step towards 508 compliance for the Alfabet 11 user interface. Users need to know only a small number of key combinations to perform major actions on the user interface.
- **Combo Box Tooltips:** Tooltips are displayed for values in drop-down fields in data workbenches, content areas, and editors. Users can hover over the info symbol next to a value in the drop-down menu and display a tooltip that provides information to help them understand the available options for selection.
- **Enumerations for Integers:** Enumerations are now supported – in addition to string values – also for integer values.
- **SCIM Management for User Groups:** SCIM is a standard for cross-domain identity management and an important part of identification management in cloud environments. Alfabet 11.9 supports SCIM management with Okta® or AzureAD® as the identity provider. SCIM integration pushes user data from the identity provider to the Alfabet database, updating the user information

regularly. New users are added to the Alfabet database as anonymous users. The user profile assignment is updated based on identity provider group affiliation. A web-based SCIM management application is available for administration.