

Alfabet

Alfabet 11.9.1

Product Announcement

August 2025



ABOUT ALFABET / BIZZDESIGN

Trusted by global industry leaders, Alfabet provides the tools to plan and execute digital transformation with precision—ensuring that IT not only supports but drives business success. Whether it's streamlining operations, mitigating risks, or fostering sustainable growth, our solutions deliver measurable value. Backed by a passionate and innovative team, we are committed to enabling enterprises to thrive in today's dynamic digital economy.

Alfabet is part of the Bizzdesign Group, a global leader in enterprise transformation, providing the expertise and solutions needed for sustainable, future-ready success.

© 2025 Alfabet BD GmbH. All rights reserved. Alfabet BD GmbH and all Alfabet BD GmbH products are either trademarks or registered trademarks of Alfabet BD GmbH. Other product and company names mentioned herein may be the trademarks of their respective owners.

Introduction

Building on the new features of Alfabet 11.9 (GA July 2025), Alfabet 11.9.1 provides several new and enhanced Accelerators and Business Questions to ensure your organization keeps pace with business and technology trends and imperatives. These pre-configured feature sets boost your ability to implement critical use cases quickly and leverage new insights and portfolio management capabilities to rapidly achieve business value.

Here are the highlights of Alfabet 11.9.1:

- **AI Portfolio Management - Accelerator:** Have full transparency over where AI is being used in the organization and establish responsible AI practices by understanding the AI risk profile and achieving compliance to AI regulations.
- **Agile Transformation - Accelerator:** Document operational and development value streams to align across the enterprise and improve visibility into how value flows from concept to delivery to support better decision-making, investment prioritization, and Lean Portfolio Management in accordance with SAFe. Manage Agile implementation with ARTs, PIs and Iterations.
- **What is our business-IT alignment? - Business Question:** Understand how the business is dependent on technologies using a network diagram showing relationships between business capabilities and technologies.
- **What are our service costs? - Business Question:** Optimize service costs by understanding cost allocation and cost per lifecycle phase.
- **Alfabet - Horizon Interoperability Enhancements:** Leverage seamless interaction between the Horizon and Alfabet repositories and a flexible approach to implementation of the integration for greater insights into your transformation planning and execution.

AI Portfolio Management - Accelerator

As organizations strive to harness the potential of AI for business innovation, they are just as consumed with establishing governance over its usage and proliferation across the enterprise. Strategic Portfolio Management (SPM) best practices should be used for business-aligned AI innovation management, strategic technology planning and AI portfolio management.

Alfabet 11.9.1 delivers with the **AI Portfolio Management Accelerator** for strategic AI governance. It ensures transparency into where AI is being used, alignment with business strategy, and smart management of the AI portfolio by providing visibility into AI deployment and usage - linking to business and technical architectures.

New object classes delivered with the AI Portfolio Management capability are AI Use Case, AI Feature, AI Model and AI Technology. An **AI Use Case** describes the capabilities and technologies used to achieve a defined business goal using AI. An **AI Feature** is a business instantiation of an AI technology to support an AI use case. It is provided by a business application. AI Features are built with **AI Models** (programs such as ChatGPT or Claude) and **AI Technologies** (task-performing technologies such as machine translation or text classification). These four classes help catalog the various AI elements involved in AI usage in an organization. They are associated with architecture elements such as applications and components to understand where AI is being used in the organization and promote reuse and operational efficiency.

Objects in the new AI-related classes are captured using new, fit-for-purpose data workbenches accessible through the new AI Portfolio Management section available in the navigation panel. Associating AI features with an application is done in the new AI Context page in the application content area.

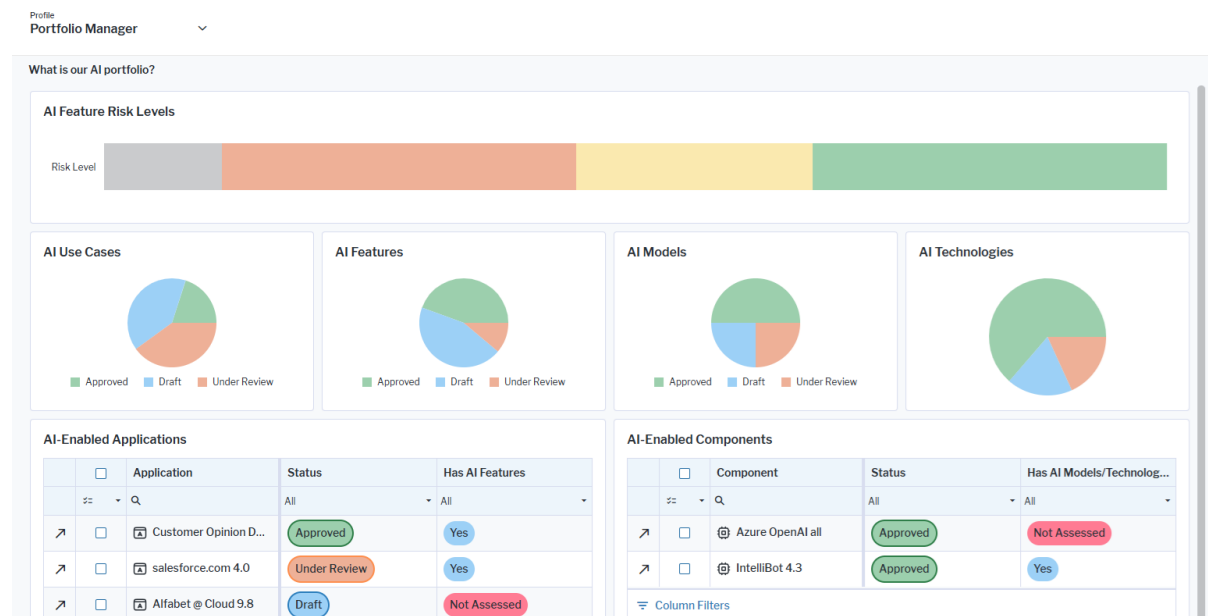


Figure 1: Alfabet 11.9.1's AI Portfolio Management Accelerator provides an overview of the AI portfolio across the organization.

Alfabet 11.9.1 also delivers with three new business questions. Business questions are sets of pre-configured views, reports and data capture templates that target the most commonly asked questions around a particular topic – in this case, the AI portfolio. Here are the new AI-related business questions:

- **“What is our AI portfolio?”**: This business question provides a comprehensive overview of the AI portfolio in your enterprise. Up-to-date reports provide a single source of truth about the applications and components providing AI. Review the overall level of risk of AI features to the enterprise as well as the approval status of your AI portfolio. (See Figure 1)
- **“What are our AI dependencies?”**: This business question displays a network diagram of the relationships between the AI use cases, their supporting AI features, AI models and AI technologies used, and the business capabilities that are enabled by the AI architecture. Use this business question to perform an impact analysis on any change to the AI portfolio from any perspective. (See Figure 2)
- **“Where is AI impacting business?”**: This business question displays a capability map to identify and manage AI-driven business capabilities to understand the role of AI in the business landscape. Analyze which parts of the business leverage AI technology and where AI could be used for market differentiation. (See Figure 3)

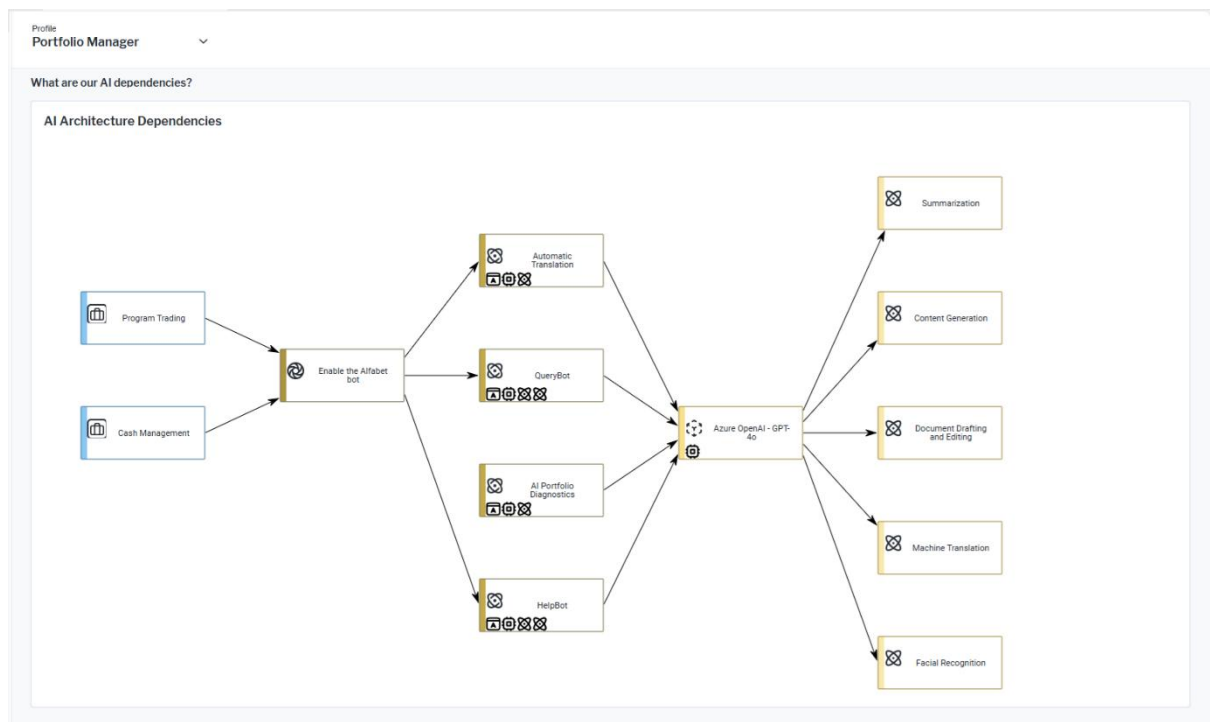


Figure 2: The business question “What are our AI dependencies?” shows the relationships between (columns from left to right): Business Capability, AI Use Case, AI Feature, AI Model, and AI Technology.

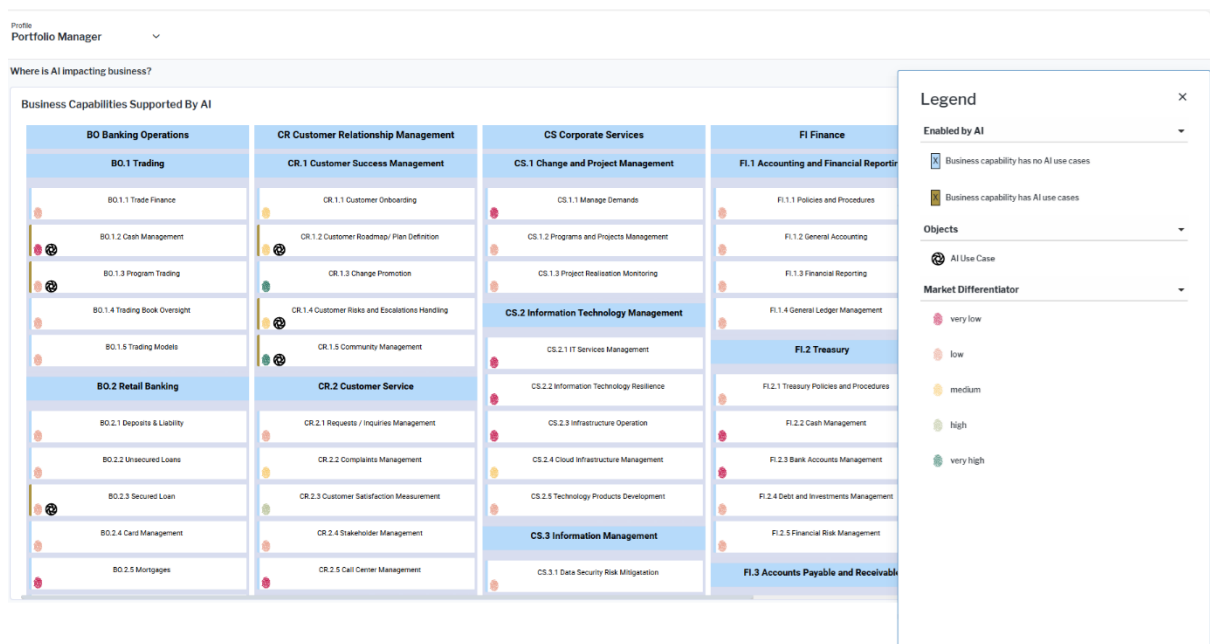


Figure 3: The business question “Where is AI impacting business?” shows which business capabilities are using AI and which business capabilities are critical to the company for market differentiation.

The speed at which AI is proliferating in all areas of an organization is resulting in a lot of risk – intentional and not. In addition to providing a greater degree of governance of the AI portfolio, Alfabet 11.9.1 ensures risk assessment – investment risk and regulatory risk - on all levels of the AI portfolio. It guarantees the transparency to prevent black-box decision-making about AI technologies and ensures regulatory and legal compliance with regional AI laws by specifying where AI can be used in the enterprise. A dedicated approval workflow makes certain that all aspects of the AI portfolio are approved, and each AI use case is reviewed by the responsible role in terms of the AI architecture as well as legal, data privacy, and security issues.

Agile Transformation - Accelerator

Alfabet's offering helps organizations scale Agile development and delivery in a governed fashion and ensure alignment to business strategy. It gives a clear line-of-sight from strategic direction, through investment decisions, to the choice of epics and features to be implemented, including the resulting impacts on the enterprise architecture. It supports Lean portfolio management for alignment of budget and resources to strategy as well as interfaces to Agile development and DevOps environments for governance and optimization of delivery.

In Alfabet 11.9.1, Agile capabilities have been extended to align more fully with the SAFe framework to drive enterprise transformation in alignment with articulated strategic intentions. Alfabet 11.9.1 captures operational and development value streams - core concepts in SAFe. An operational value stream represents the activities needed to deliver a product or service. A development value stream captures the sequence of activities to develop and support the product or service delivered through an operational value stream. In Alfabet, these activities are associated to architecture elements.

Both operational and development value streams are accessible through the Agile Architecture section of the navigation panel. Also accessible are Agile release trains (ARTs), program increments (PIs), and iterations which can be assessed and managed in workbenches and content areas.

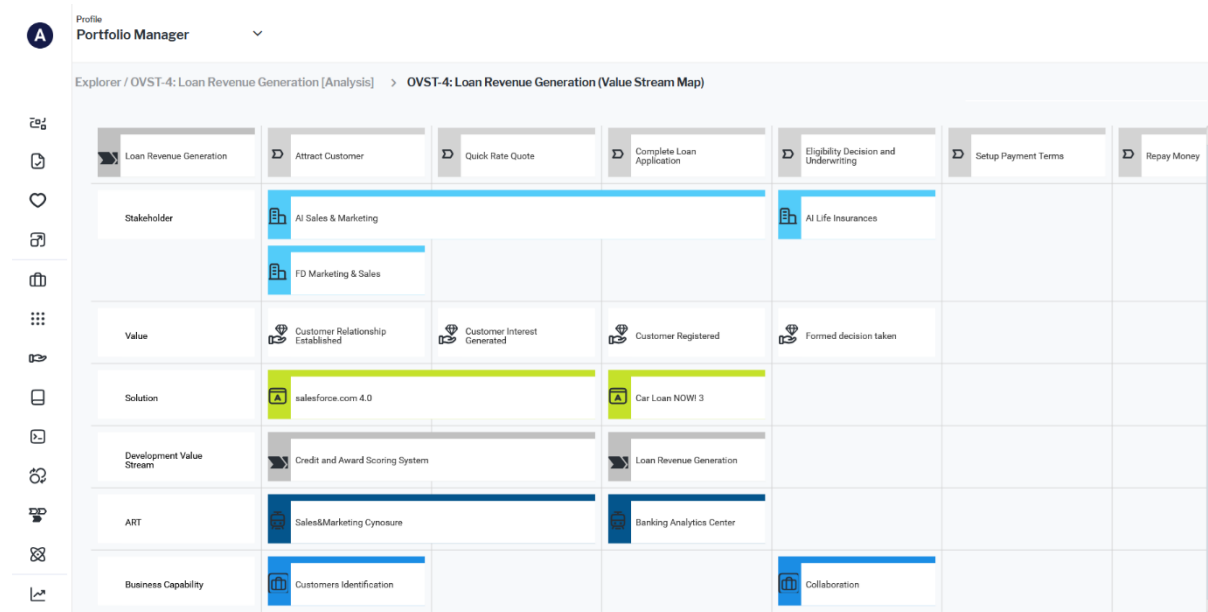


Figure 4: Alfabet 11.9.1 captures operational value streams together with associated architecture elements, development value streams and ARTs.

Alfabet 11.9.1

What is our business-IT alignment? - Business Question

This business question uses a network diagram to understand the dependency of business on IT Capabilities. It focuses on the relationships between business capabilities, applications and technologies. Use this business question to identify the technologies supporting your critical business capabilities for better risk assessment and IT investment planning.

“What is our business-IT alignment?” is found in the Business Relationship section of the navigation panel. Select one asset in the filter to generate the network diagram. Use the filter to also define various aspects to highlight in the visualization.

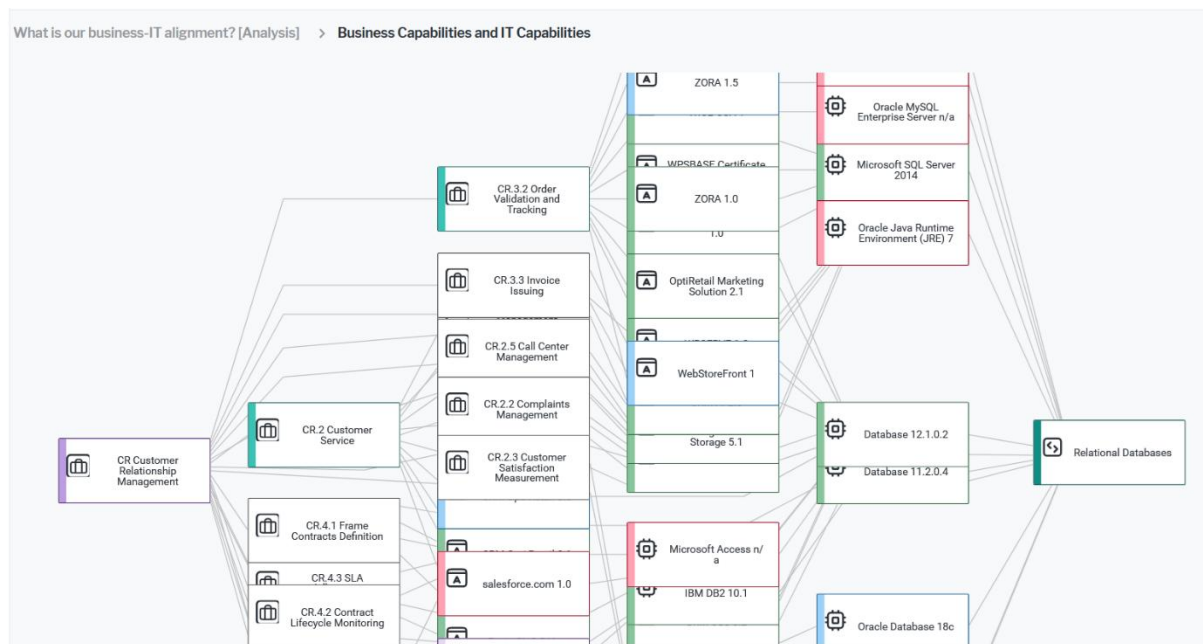


Figure 6: This network diagram depicts business and technology relationships: business capabilities (suitcase icon), their supporting applications (“A” icon), the components supporting the applications (double-square icon), and the components’ technology category (square-arrow icon).

What are our service costs? - Business Question

This business question uses multiple reports to help identify service cost allocation, breaking down information into cost drivers, cost types, and costs per lifecycle phase for current and planned costs. What-if analyses provide insight to phasing in and phasing out services. Use this business question to determine the most costly services, and analyze cost evolution over time. This business question is found in the Finance section of the navigation panel.

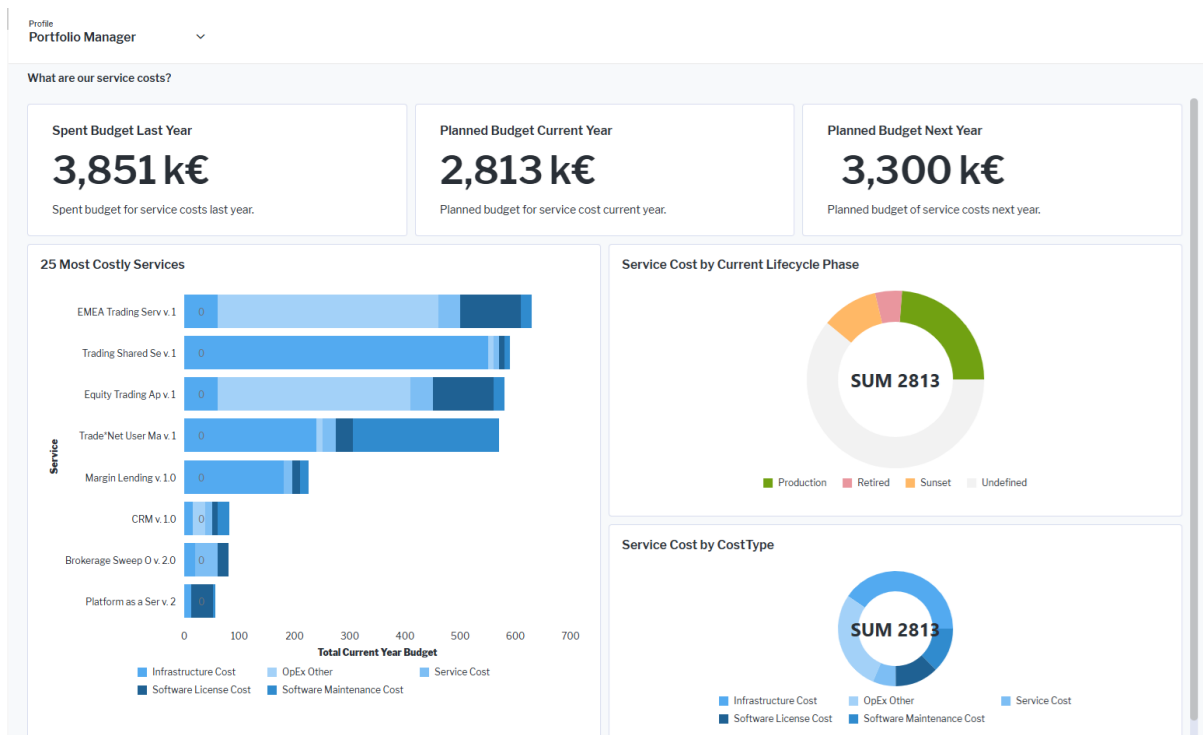


Figure 7: Use the business question "What are our service costs?" to assess cost of services associated with providing services to the organization.

Alfabet - Horizon Interoperability Enhancements

Interoperability between Bizzdesign's Alfabet and Horizon provides the basis for combining Horizon's market-leading architectural design capabilities with Alfabet's powerful transformation planning and portfolio management capabilities. Together, Alfabet and Horizon offer an unbeatable combination that greatly improves agility in strategy execution by providing tighter business-IT collaboration, clear insight into change impacts, and cost reduction through business and IT standardization.

Alfabet 11.9.1 offers further functional developments to ensure seamless interaction between the Horizon and Alfabet repositories and to enable flexible implementation of the integration. Alfabet and Horizon now support a fully dynamic and customizable 2-way integration. The integration model is constructed in Horizon and synchronized between both systems. New data endpoints enable Horizon to query and fetch meta-model data for all Alfabet classes relevant to IT portfolio management. The Alfabet - Horizon class meta-model is created in the Connect Designer in Horizon, Alfabet consumes the schema, and Alfabet classes are enabled to support the bi-directional integration. In Alfabet, the Horizon ID and Horizon URL attributes are displayed in the content area of a relevant asset, and users can navigate to the relevant business process in Horizon via links. Changes to the mapped data in Alfabet are dynamically updated to Horizon.