

# What's New in Alfabet 11.10

GA: November 2025

# Strategic initiatives for Alfabet

Flexible and  
consistent  
**dashboarding/  
reporting**

Data filtering and  
**scope sharing**

Easy and guided  
**data entry**

State of the art  
**modelling  
capabilities**

**Functional  
richness** of Alfabet  
10 and beyond

**Migration** of  
existing customers

Intelligent &  
contextualized  
**Help**

Intuitive and web-  
based **solution  
configuration**

Plug and play  
**integrations**

Performant and  
**modern system**

# Alfabet 11.10 Release Highlights

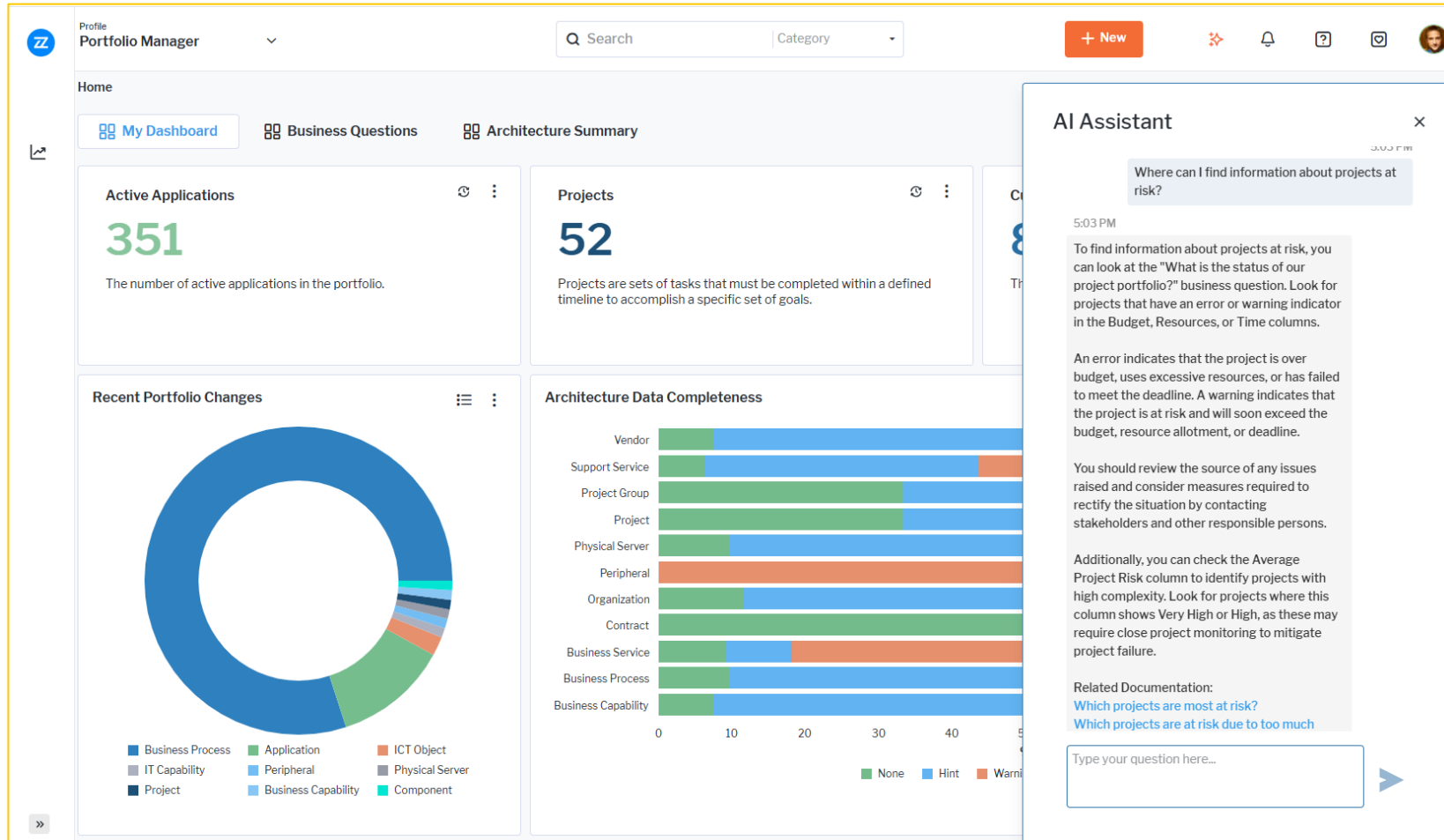


## Release Highlights:

- Gen AI Help Bot
- Analytics Dashboard
- Object Inspection
- Runtime Editors
- External Link on Left Navigation Panel
- Modernized Logging
- Smart Refresh:
  - Optimized CI Loading
  - Optimized Indicator Calculation
  - Optimized Data Quality Rule View & Calculation

# Gen AI Help Bot

From search to solution: AI that knows your product inside out

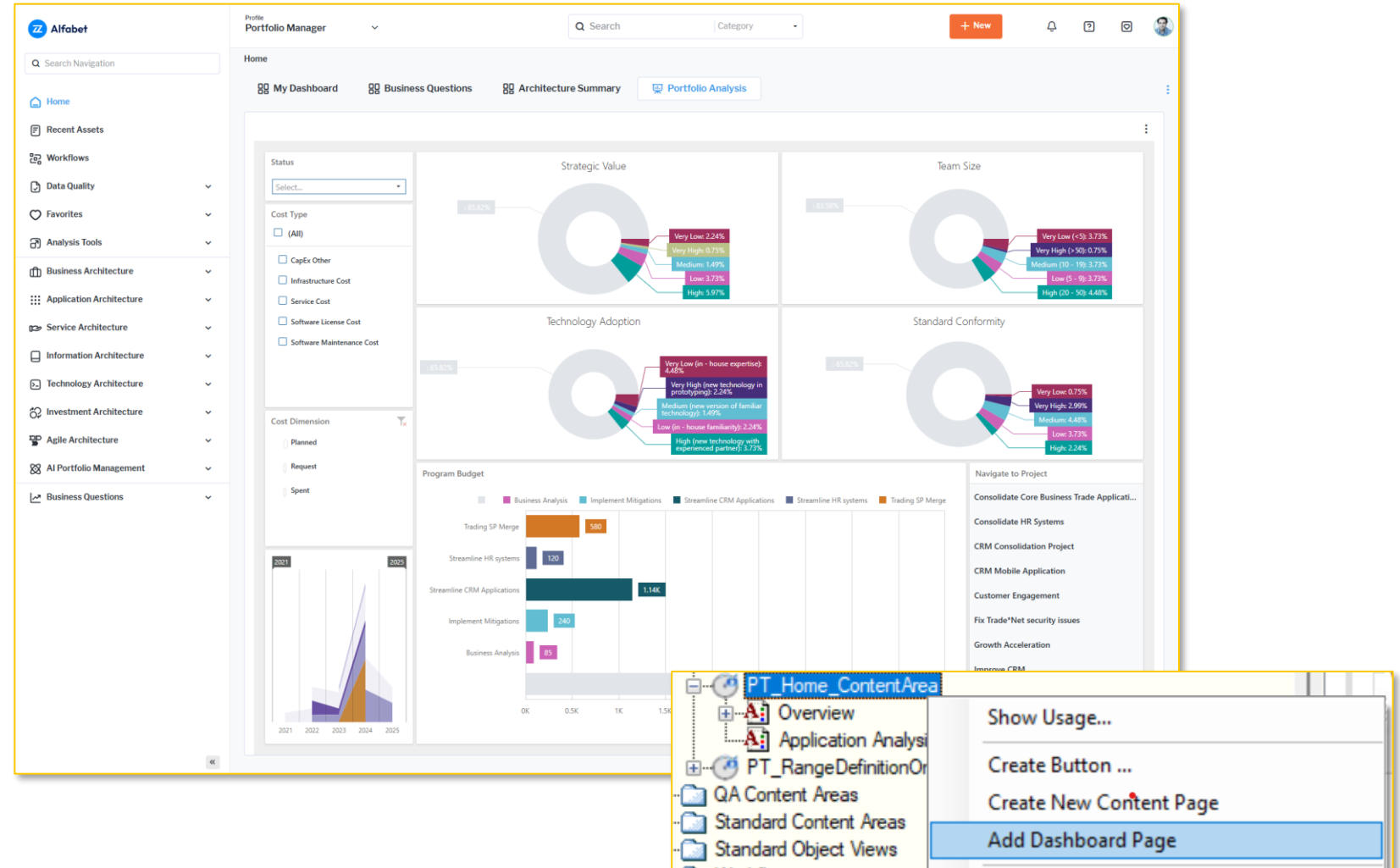


- Faster adoption of Alfabet within your organization.
- AI-based help and general 'how to..?' for end users based of Alfabet Documentation.
- Use of AI services is entirely optional and requires explicit opt-in.
- The AI service can be turned on/off per profile. The default being turned on for every profile.
- No portfolio data is used to train nor customer data sent to any AI service.

# Analytics Dashboard

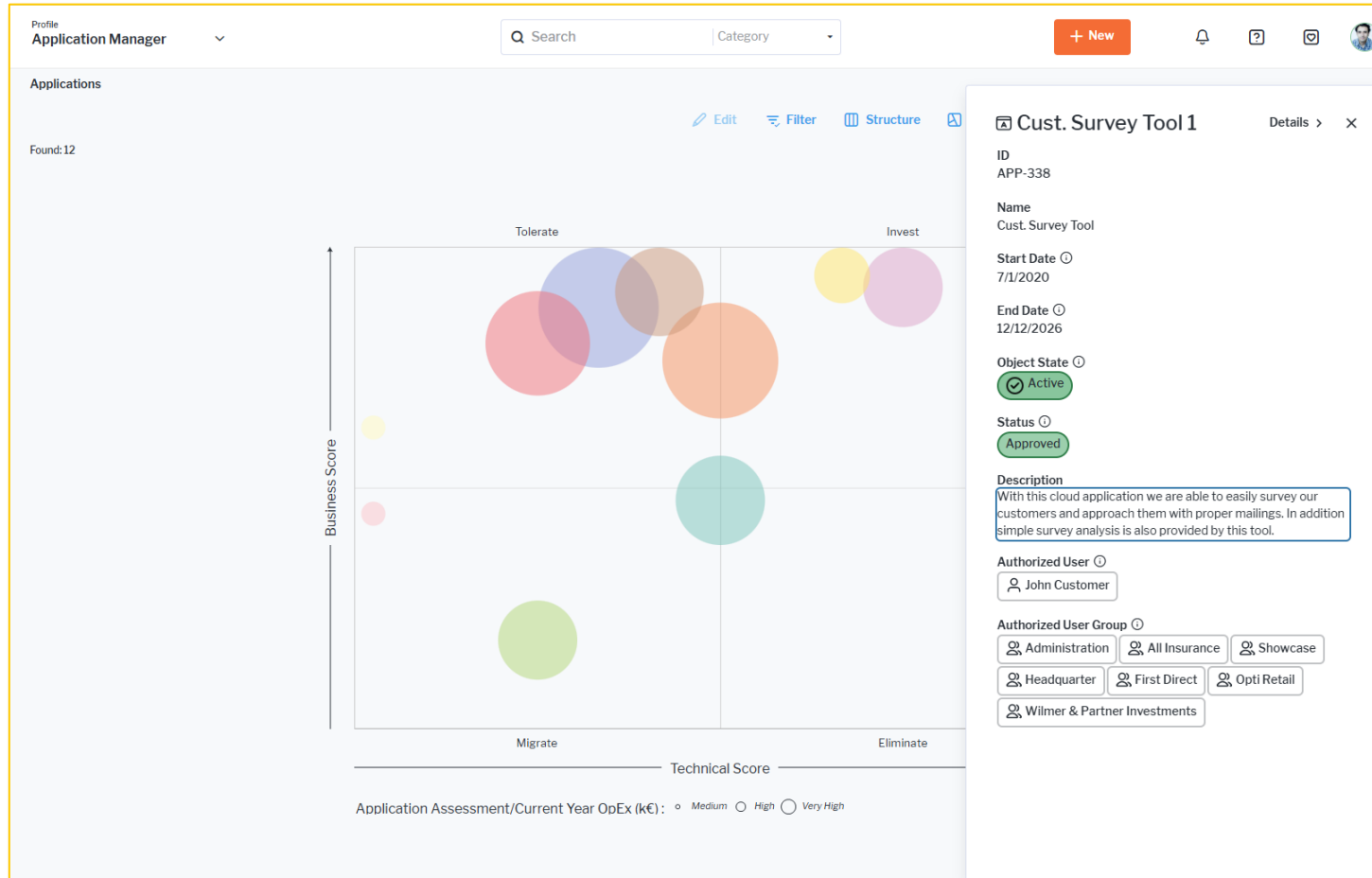
Self-determination of what drives good decisions: personalized dashboards built by users, powered by data

- User-designed Analytics Dashboard using authorized data providers.
- Available for sharing with user community.
- Dashboard Page is a new Expand object. Link previously created Analytics Dashboards with Dashboard Pages to surface in user profiles.
- Full backward compatibility of Analytics Dashboard.



# Object Inspection

Dive into object details with one click



- Instantly open a right-side panel with a single click on any object in tables or graphical reports. No need to navigate away, always keeping the context.
- Use double click to navigate to the object.
- Edit object attributes directly within the preview panel using intuitive inline controls, streamlining data maintenance.
- Data action rules with defined target properties are fully supported in the preview panel, enabling smooth in-panel updates.
- Configure which attributes appear in the panel via class settings and metamodel properties providing control over what users see and edit.

# Runtime Editors

Design less, deliver more: Runtime editors from metamodel

- Easily configure editors without building custom forms. Runtime editors automatically support your custom properties.
- Editors are generated dynamically based on property types, eliminating the need for manual control placement or pixel-based design.
- Pre-filling, range definitions, and visibility rules are now managed directly in the class model and settings.
- Legacy editors remain supported, but runtime editors pave the way for simplified maintenance and faster solution design.

The screenshot displays the 'Application Manager' interface. At the top, there's a search bar and a dropdown for 'in all categories'. Below this is a table with columns: #, Name, ID, Version, Short name, Object state, and Organization. The table lists various applications like 'A-Trading', 'ACCOUNT', 'AF HR Online EU', etc. A modal form titled 'Create new application' is overlaid on the table. The form has fields for Name, Organisation, Version, Start Date, Description, End Date, Object State, and Responsible Owner, each with a 'Placeholder text' label. At the bottom of the modal are buttons for 'Cancel', 'Close and continue as guided editing', and 'Create'.

#	Name	ID	Version	Short name	Object state	Organization
1	A-Trading	APP-3439	1	A-Trd	Active	HQ Human Resources
2	ACCOUNT	APP-3217	1	ACCT	Active	FD Human Resources
3	ACCC				Active	AI Product Management
4	Admin				Active	Legal Affairs
5	AF Er				Retired	Corporate Business Architecture
6	AF Er				Active	FD Credits & Financing
7	AF Gc				Retired	Legal Affairs
8	AF Gc				Retired	Corporate Development & Inform
9	AF Gc				Plan	HQ Human Resources
10	AF Gc				Plan	HQ Finance & Controlling
11	AF HR				Active	Legal Affairs
12	AF HR				Active	Corporate Development & Inform
13	AF HR Online EU	APP-3285	2.2 Var.	AI-Min	Active	Corporate Business Architecture
14	AF HR Online US	APP-3286	2.2 Var.	Alfabet Cloud	Active	OR Strategy, Marketing & Sales
15	AF WorkPortal	APP-3278	1	Alfabet FL	Plan	Corporate Systems Architecture
16	Agilcomm	APP-3544	1.5	ALLF PISA	Plan	FD Human Resources
17	Agile Access	APP-3456	1	Anno-Fact	Active	AllFinance Holding
18	Agile Access	APP-3457	2	FedRes Announce	Active	Legal Affairs

# Smart Refresh

Performance meets precision: Reload only when it matters

- Optimized Content Item Reloading  
Selective opt-in updates for content items eliminates unnecessary refreshes leading to an improved UI responsiveness.
- Optimized Indicator Calculation and Optimized Data Quality Calculation.  
Computation rules and data quality checks now run asynchronously, with manual recalculation option and timestamp tracking giving users more control, reducing system load and leading to an improved UI responsiveness.
- Quick Data Quality Insights. Breadcrumb badges now highlight the highest severity of findings per object. Click to view detailed reports, including timestamps for first detection and last recalculation.

The screenshot displays the Alfabet Portfolio Manager interface. The main view is for 'APP-143: Customer Opinion DB 6.1.4'. A yellow box highlights a 'Warning' badge in the breadcrumb navigation. A yellow arrow points from this badge to a 'Data Quality Findings' modal window on the right. The modal shows two findings:

- Warning: DQR-122 Cost information is missing**  
Application costs should be maintained for the budgeted years.  
Since: 03.11.2025 09:06 | Last Check: 03.11.2025 09:11  
[Specify the application costs for the budgeted years.](#)
- Hint: DQR-106 Application description is missing**  
The description is important to understand the purpose of the application.  
Since: 13.02.2024 13:45 | Last Check: 03.11.2025 09:11  
[Define the person that has the role Application Manager for the application.](#)

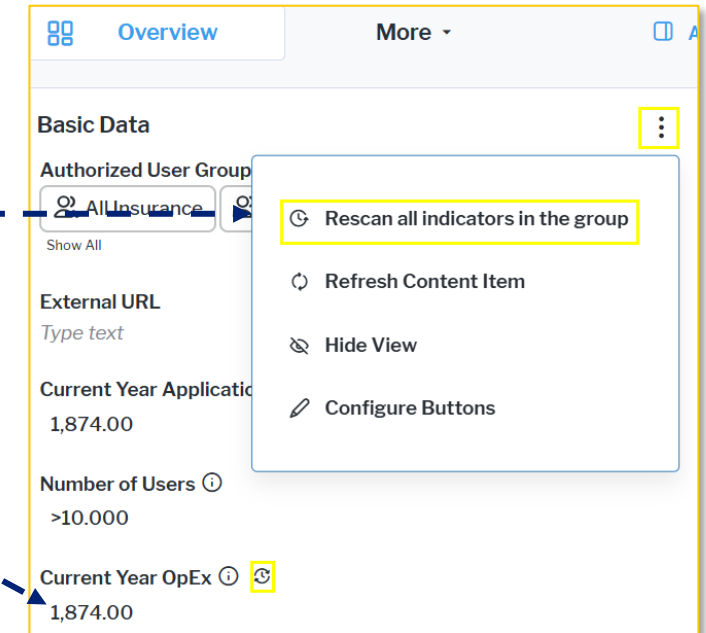
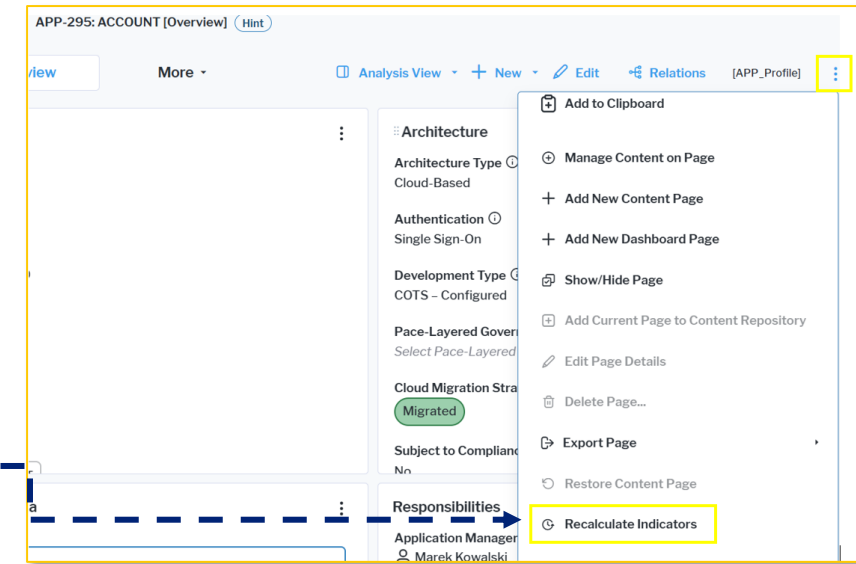
The main interface also shows various data fields for the application, including Basic Data, Lifecycle Data, and Responsibilities.



# Optimized Indicator Calculation

## Asynchronous Computing of Calculated Indicators: Enhanced Performance

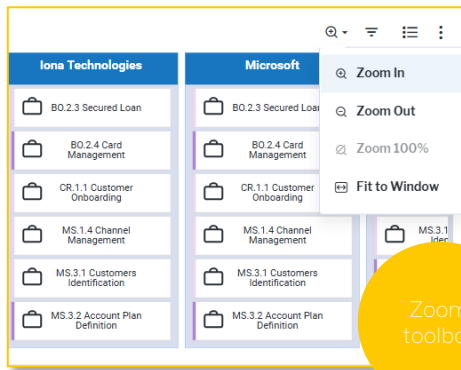
- Calculated indicators are now computed asynchronously on any object change, allowing for enhanced performance.
- The new option “Recalculate Indicators” , enables users to trigger the computation of the calculated indicators associated to the object.
- Another similar option in a property group “Rescan all indicators in the group” enables the triggering of the calculated indicators present only in that group.
- Users can check the last calculated time of the indicators when present within a property group by hovering over the icon, enabling better user decisions on recomputing the indicators.



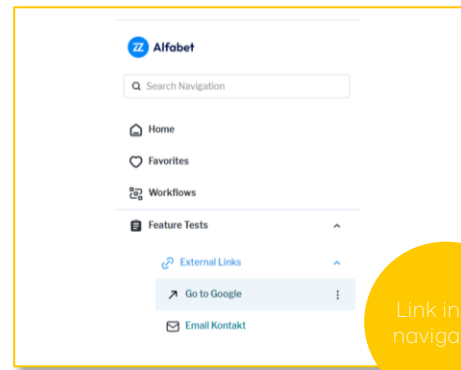
# More user experience enhancements

From smarter navigation to richer visuals: Day-to-day usability just got better

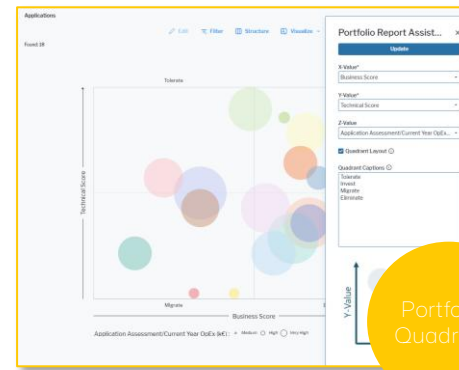
Zoom toolbar, external links, quadrant charts, and colored badges enhance clarity, control, and navigation.



Zoom toolbar



Link in left navigation



Portfolios Quadrants

A screenshot of a software interface showing a table with status and state badges. The table has columns for 'Data Source', 'Data Quality', and 'Recycles'. The 'Recycles' column contains a list of items with corresponding status and state badges. The badges are colored and labeled with terms like 'Active', 'Inactive', 'Error', and 'Warning'.

Status and State Badges

## Zoom toolbar

- Zoom menu added to diagram report
- Available in content items and report navigation

## Link in left navigation

- Add external links via left panel
- Defined in Workbench
- Configured in expand and deployed via .amm

## Portfolio quadrants

- Quadrant layout in DWB portfolio charts.
- Just check a box and add a label, no config needed

## Status & state badges

- Badge styling for Release Status and Object State now supported in tabular and Gantt reports via new report instruction

# Other Enhancements

- Modernized Logging: Industry-standard logging mechanism "NLog" provides maximum flexibility to cover multiple logging needs and providing the following benefits:
  - At startup, the log file includes not only log messages but also environment details such as the host operating system and processor count, facilitating support in case of issues.
  - Logging is consistent across all functionalities while enabling log target and log level definition for individual functionalities
  - NLog supports over 100 logging targets e.g., console, various file formats (e.g. XML, CSV and JSON), database and Windows Log. Log messages can be written to different targets in parallel and emails can be configured to be sent automatically when errors are detected.
- Improved Current Event Bus: In previous releases of Alfabet, the log generation for event processing led to issues and deadlocks in event execution. Logging has been corrected and event execution is improved.
- Resource Planning: The new object class ResourceRequest and the new object class property ResourceRequest for the class Skill Request have been added to the class model to support current and ongoing enhancements to resource and project management.

# Thank you.

